

PUN Index GME

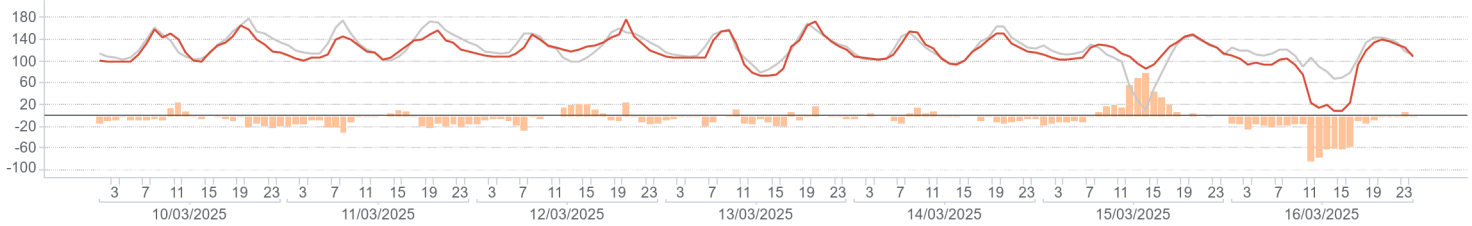
	Average (€/MWh)	Change (€/MWh)	Change (%)
Baseload	117,38	-5,73	-4,7%
<i>Peak</i>	127,17	-0,81	-0,6%
<i>Off-peak</i>	111,94	-8,47	-7,0%
Hourly maximum	176,69		
Hourly minimum	8,15		

Volumes

	MWh	Average (MWh)	Change (%)
Total supply	National	9.019.734	53.689 0,2%
	Foreign	919.251	5.472 -17,8%
	Total	9.938.986	59.161
Sales	National	4.557.420	27.127 4,4%
	Foreign	861.986	5.131 -19,0%
	Total	5.419.406	32.258
Purchases	National	5.292.843	31.505 0,1%
	Foreign	126.563	753 -10,5%
	Total	5.419.406	32.258

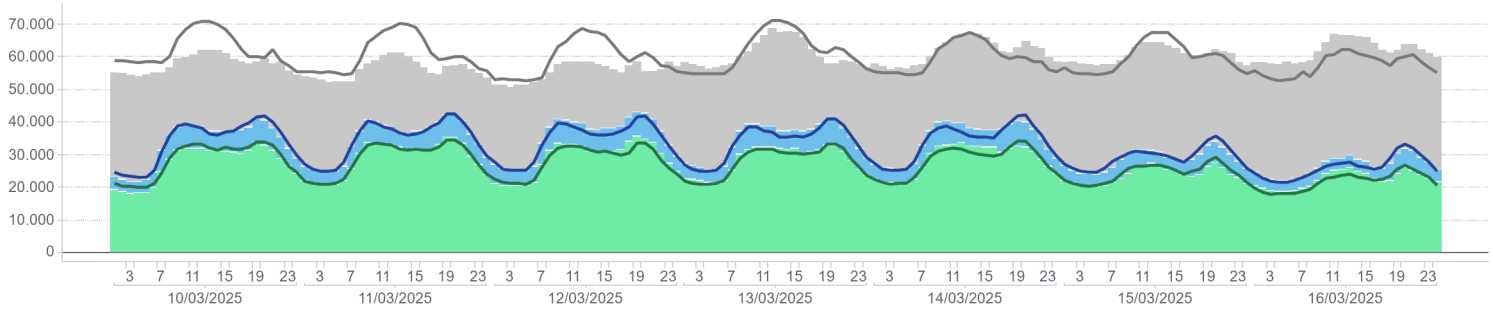
PUN Index GME (€/MWh)

Hourly price / previous week / Price delta



Volumes Supplied, Sold and Purchased (MWh)

Volume unsold / Off-IPEX Sales / On-IPEX Sales / On-IPEX Sales - prev. week / Off-IPEX Sales - prev. week / Volume unsold prev. week



Electricity Supply

	MWh	Change (%)	Structure
IPEX	4.483.975	-0,5%	82,7%
<i>Market participants</i>	3.195.812	9,0%	59,0%
<i>GSE</i>	435.844	-16,4%	8,0%
<i>Foreign zones</i>	852.319	-19,0%	15,7%
<i>Balance of PCE schedules</i>	0		0,0%
PCE (including MTE)	935.431	1,3%	17,3%
<i>Foreign zones</i>	9.667	-12,1%	0,2%
<i>National zones</i>	925.764	1,4%	17,1%
<i>Balance of PCE schedules</i>	0		0,0%
VOLUMES SOLD	5.419.406	-0,2%	100,0%
VOLUMES UNSOLD	4.519.580	-3,6%	
TOTAL SUPPLY	9.938.986	-1,8%	

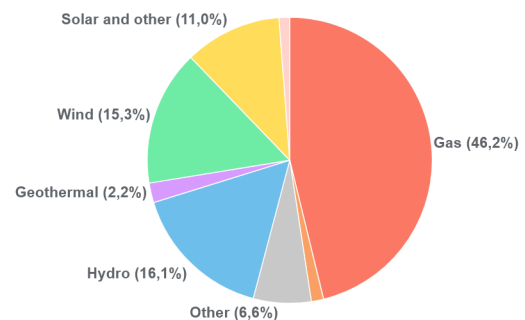
Electricity Demand

	MWh	Change (%)	Structure
IPEX	4.483.975	-0,5%	82,7%
<i>Acquirente Unico</i>	99.991	-0,7%	1,8%
<i>Other market participants</i>	3.536.979	1,3%	65,3%
<i>Pumped-storage plants</i>	25.505	2,6%	0,5%
<i>Foreign zones</i>	126.561	-10,5%	2,3%
<i>Balance of PCE schedules</i>	694.939	-7,0%	12,8%
PCE (including MTE)	935.431	1,3%	17,3%
<i>Foreign zones</i>	0		0,0%
<i>Acquirente Unico - National zones</i>	5.400	-43,8%	0,1%
<i>Other participants - National zones</i>	1.624.970	-2,2%	30,0%
<i>Balance of PCE schedules</i>	-694.939	-7,0%	-12,8%
VOLUMES PURCHASED	5.419.406	-0,2%	100,0%
VOLUMES UNPURCHASED	273.223	-4,7%	
TOTAL DEMAND	5.692.628	-0,4%	

Volumes Sold by Source

	Total (MWh)	Average (MWh)	Change (MWh)	Change (%)
Conventional	2.466.884	14.684	-122	-0,8%
<i>Gas</i>	2.104.832	12.529	10	0,1%
<i>Coal</i>	63.292	377	2	0,5%
<i>Other</i>	298.761	1.778	-133	-7,0%
Renewable	2.035.344	12.115	1.254	11,5%
<i>Hydro</i>	733.524	4.366	-228	-5,0%
<i>Geothermal</i>	101.164	602	-5	-0,8%
<i>Wind</i>	698.690	4.159	2.031	95,4%
<i>Solar and other</i>	501.966	2.988	-544	-15,4%
Pumped storage	55.191	329	2	0,6%
Total	4.557.420	27.127	1.135	4,4%

Volumes Sold by Source



Zonal price

	Northern IT		Central-northern IT		Central-southern IT		Southern IT		Calabria		Sicilia		Sardegna	
	€/MWh	Var	€/MWh	Var	€/MWh	Var	€/MWh	Var	€/MWh	Var	€/MWh	Var	€/MWh	Var
Baseload	119,65	-2,5%	119,65	-2,5%	114,50	-6,7%	109,45	-10,8%	109,45	-10,8%	109,45	-15,4%	114,50	-6,6%
<i>Peak</i>	133,12	4,6%	133,12	4,6%	119,83	-5,8%	105,69	-16,9%	105,69	-16,9%	105,69	-24,6%	119,83	-5,5%
<i>Off-peak</i>	112,17	-6,7%	112,17	-6,7%	111,54	-7,3%	111,54	-7,3%	111,54	-7,3%	111,54	-9,5%	111,54	-7,3%
Hourly maximum	176,69		176,69		176,69		176,69		176,69		176,69		176,69	
Hourly minimum	9,94		9,94		4,45		0,01		0,01		0,01		4,45	

Zonal volumes

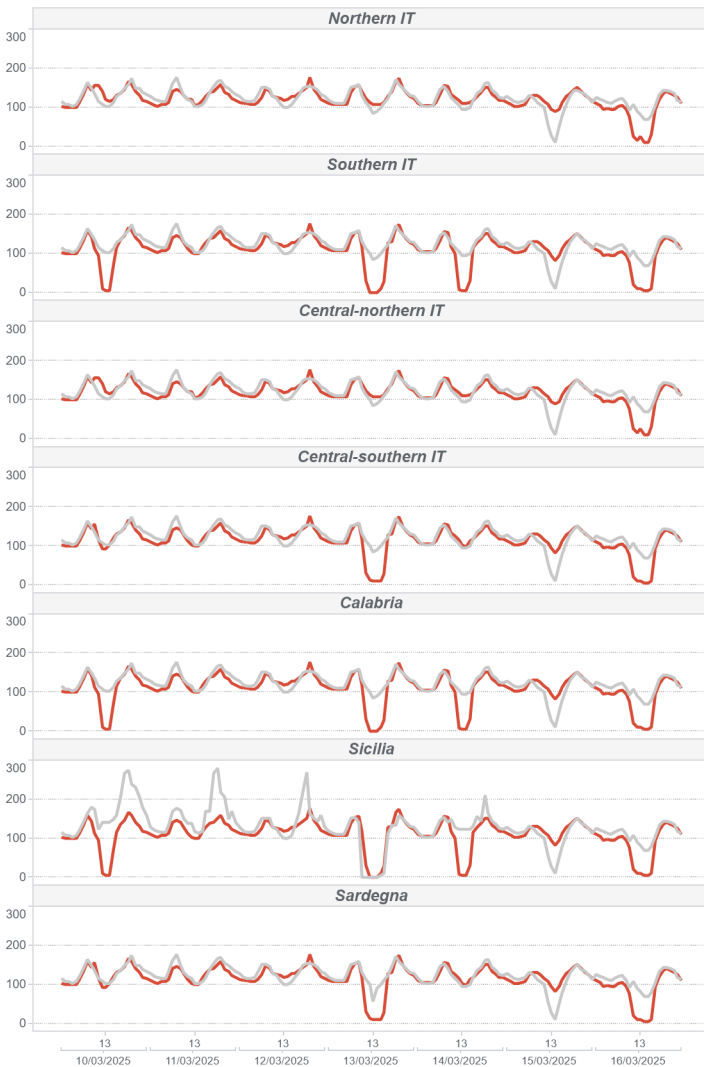
		Northern IT		Central-northern IT		Central-southern IT		Southern IT		Calabria		Sicilia		Sardegna	
		MWh	Var	MWh	Var	MWh	Var	MWh	Var	MWh	Var	MWh	Var	MWh	Var
Total supply	<i>Total</i>	4.306.270	-217.937	398.854	-15.169	1.532.611	43.647	1.267.777	224.077	585.632	25.197	628.353	-38.930	300.238	-1.396
Sales	<i>Total</i>	2.162.947	-33.073	319.492	-14.327	635.328	65.161	660.169	165.439	246.249	-16.222	299.734	21.312	233.502	2.321
Purchase	<i>Total</i>	3.055.289	21.798	460.330	1.581	924.010	-11.553	316.989	-3.001	98.215	-2.901	295.949	-4.662	142.062	2.362
Total supply	<i>Average</i>	25.633	-4,82%	2.374	-3,66%	9.123	2,93%	7.546	21,47%	3.486	4,50%	3.740	-5,83%	1.787	-0,46%
Sales	<i>Average</i>	12.875	-1,51%	1.902	-4,29%	3.782	11,43%	3.930	33,44%	1.466	-6,18%	1.784	7,65%	1.390	1,00%
Purchase	<i>Average</i>	18.186	0,72%	2.740	0,34%	5.500	-1,23%	1.887	-0,94%	585	-2,87%	1.762	-1,55%	846	1,69%

Volumes sold by Source. Hourly Average

		Northern IT		Central-northern IT		Central-southern IT		Southern IT		Calabria		Sicilia		Sardegna	
		MWh	Var	MWh	Var	MWh	Var	MWh	Var	MWh	Var	MWh	Var	MWh	Var
Conventional		8.743	4,5%	691	-7,1%	1.501	-3,0%	1.492	-5,2%	917	-20,5%	569	-13,3%	771	0,9%
<i>Gas</i>		7.826	6,1%	617	-8,0%	1.237	-5,1%	1.227	-6,0%	779	-23,0%	540	-2,4%	304	1,4%
<i>Coal</i>		-	-	-	-	-	-	-	-	-	-	-	-	377	0,5%
<i>Other</i>		918	-7,5%	74	1,4%	265	8,1%	265	-1,3%	138	-2,8%	29	-71,9%	91	1,5%
Renewable		3.955	-12,4%	1.211	-2,6%	2.181	25,8%	2.438	77,8%	549	34,3%	1.215	21,4%	566	-3,2%
<i>Hydro</i>		2.421	-7,0%	362	2,1%	749	-3,6%	441	-7,5%	113	-1,1%	195	7,6%	87	-3,3%
<i>Geothermal</i>		-	-	602	-0,8%	-	-	-	-	-	-	-	-	-	-
<i>Wind</i>		35	16,4%	52	188,6%	923	187,0%	1.674	193,1%	363	65,0%	790	27,0%	322	-6,7%
<i>Solar and other</i>		1.499	-20,4%	195	-26,3%	509	-19,9%	324	-0,1%	73	-2,3%	231	16,2%	158	4,7%
Pumped storage		176	-6,1%	-	-	99	-10,9%	-	-	-	-	0	-	53	93,7%
Total		12.875	-1,5%	1.902	-4,3%	3.782	11,4%	3.930	33,4%	1.466	-6,2%	1.784	7,7%	1.390	1,0%

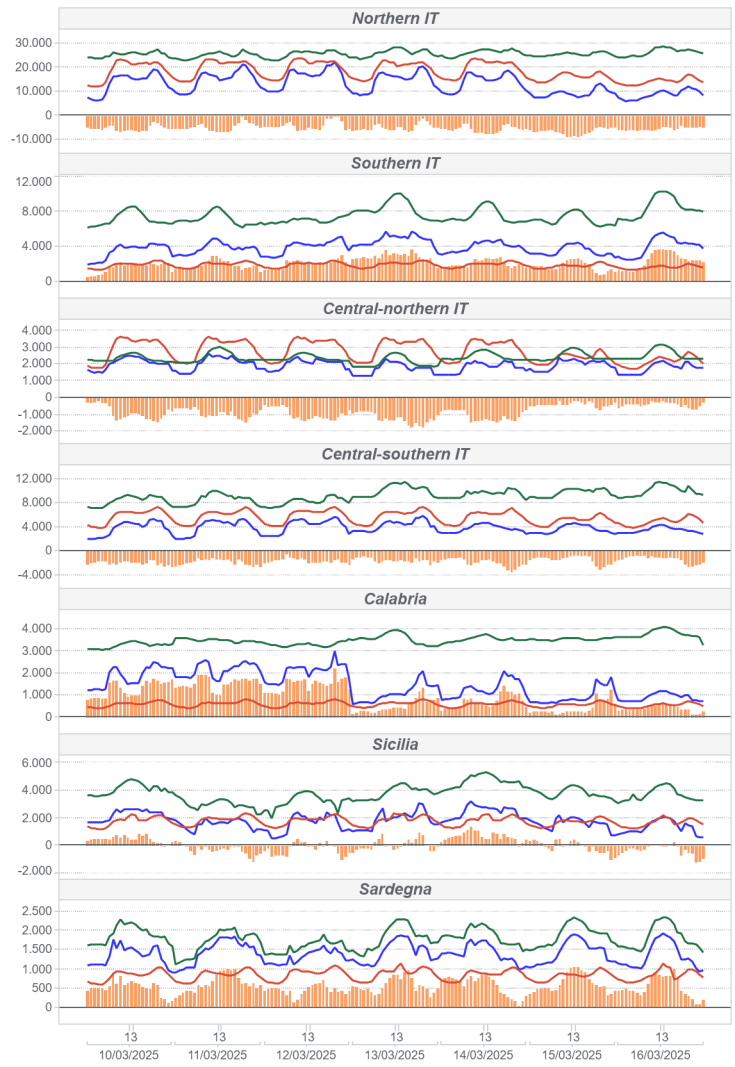
Zonal Price (€/MWh)

● Hourly price ● previous week



Zonal Volumes (MWh)

■ Sales ■ Purchases ■ Offers ■ Flow



Transmissions

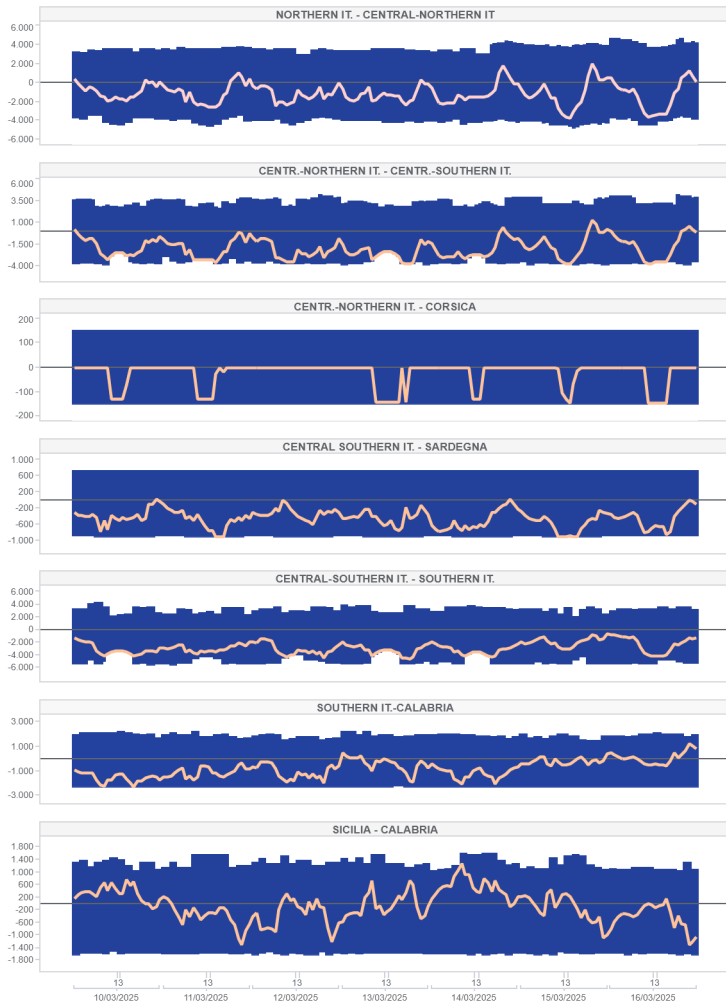
		Direction frequency		Average Physical Transmission Rights Assigned		Average flow		Average use of Physical Transmission Rights Assigned	
		Week. n.10	Week. n.11	Week. n.10	Week. n.11	Week. n.10	Week. n.11	Week. n.10	Week. n.11
France - Northern It.	FRAN-NORD	0,0%	0,0%	0	0	0	0		
	NORD-FRAN			0	0	0	0		
	SVIZ-NORD	100,0%	93,5%	4.030	2.195	2.447	1.584	4,6%	67,4%
Switzerland - Northern It.	NORD-SVIZ		6,5%	2.780	1.810	0	663	0,0%	-2,0%
	AUST-NORD	0,0%	0,0%	0	0	0	0		
Austria - Northern It.	NORD-AUST			0	0	0	0		
	CSUD-MONT	37,5%	14,9%	666	486	397	147	22,4%	4,5%
Montenegro - Central Southern It.	MONT-CSUD	62,5%	85,1%	643	416	493	459	47,9%	93,8%
	SLOV-NORD	0,0%	0,0%	0	0	0	0		
Slovenia - Northern It.	NORD-SLOV			0	0	0	0		
	GREC-SUD	0,0%	0,0%	25	18	0	0	0,0%	0,0%
Greece - Southern It.	SUD-GREC			25	18	0	0	0,0%	0,0%

		Direction frequency		Average limit		Average flow		Saturation frequency	
		Week. n.10	Week. n.11	Week. n.10	Week. n.11	Week. n.10	Week. n.11	Week. n.10	Week. n.11
Centr.-Northern It. - Centr.-Southern It.	CNOR-CSUD	54,8%	5,4%	3.448	3.372	1.047	451	0,0%	0,0%
	CSUD-CNOR	45,2%	94,6%	3.520	3.512	1.629	2.088	1,2%	16,7%
	NORD-CNOR	62,9%	15,5%	3.348	3.699	1.480	695	1,2%	0,0%
Northern It. - Central-Northern It.	CNOR-NORD	32,1%	84,5%	3.132	4.047	1.339	1.475	0,0%	0,0%
	CNOR-CORS			150	150	0	0	0,0%	0,0%
Central-Northern It. - Corsica	CORS-CNOR	7,7%	21,4%	150	150	72	115	0,0%	0,0%
	CSUD-SARD	1,8%	1,8%	720	720	53	17	0,0%	0,0%
Centro Sud - Sardegna	SARD-CSUD	98,2%	98,2%	887	887	447	458	6,5%	4,8%
	CSUD-SUD	6,5%		3.305	3.204	175	0	0,0%	0,0%
Centro Sud - Sud	SUD-CSUD	93,5%	100,0%	5.323	5.011	1.876	2.853	0,0%	11,9%
	CORS-SARD	0,0%	0,0%	150	150	0	0		
Corsica - Sardegna	SARD-CORS	100,0%	100,0%	150	150	32	40	1,2%	16,1%
	SUD-CALA	14,3%	13,7%	1.586	1.905	537	322	0,0%	0,0%
Southern It.-Calabria	CALA-SUD	85,7%	86,3%	2.350	2.348	908	989	0,0%	0,0%
	SICI-CALA	24,4%	44,0%	780	1.290	273	380	6,5%	0,0%
Sicilia - Calabria	CALA-SICI	75,6%	56,0%	856	1.581	430	427	29,2%	0,0%
	SICI-MALT	100,0%	98,8%	225	225	127	95	1,2%	0,0%
Sicilia - Malta	MALT-SICI	0,0%	0,0%	225	225	0	0	0,0%	0,0%
	COAC-SARD	0,0%	0,0%	23	23	0	0		
Sardegna - Corsica AC	SARD-COAC	100,0%	100,0%	109	109	75	55	0,0%	0,0%

		Direction frequency		Average limit		Average flow		Saturation frequency	
		Week. n.10	Week. n.11	Week. n.10	Week. n.11	Week. n.10	Week. n.11	Week. n.10	Week. n.11
Southern It.-Grecia Coupling	SUD-XGRE					0	0	100,0%	100,0%
	XGRE-SUD	0,0%	0,0%			0	0	100,0%	100,0%
	NORD-COUP	0,6%	1,8%	10.000	10.000	87	590	0,0%	0,0%
IT Coupling - Northern It.	COUP-NORD	99,4%	98,2%	10.000	10.000	3.131	2.796	0,0%	0,0%
	COUP-XAUS	17,9%	20,2%	141	134	129	136	15,5%	19,6%
Coupling - Austria Coupling	XAUS-COUP	82,1%	78,6%	337	248	326	248	75,6%	74,4%
	COUP-XFRA		1,8%	2.057	2.062	0	281	0,0%	0,0%
Coupling - France Coupling	XFRA-COUP	100,0%	98,2%	2.880	2.598	2.781	2.372	93,5%	79,2%
	COUP-BSP	38,7%	21,4%	665	666	614	556	31,0%	14,9%
Coupling - Slovenia Coupling	BSP-COUP	60,7%	76,8%	575	478	533	472	50,6%	67,9%

National transmissions (MWh)

Import Limit Export Limit Flow



Foreign transmissions (MWh)

Net Import Net Import Explicit Auction Export Limit Import Limit



MPEG

Prodotti	Minimum price (cent. €/MWh)	Maximum price (cent. €/MWh)	Average price (cent. €/MWh)	Volumes (MW)	Volumes (MWh)	Open position (MW)	Open position (MWh)
10/03/2025							
11/03/2025							
12/03/2025	65,00	65,00	65,00	250	6000,00	250	6.000
Baseload	65,00	65,00	65,00	250	6000,00	250	6.000
14/03/2025							
15/03/2025							
16/03/2025							
10/03/2025							
11/03/2025							
12/03/2025							
Peakload	65,00	65,00	65,00	50	600,00	50	600
13/03/2025							
14/03/2025							
TOTALE				550	12.600		

▒ Volumes ↗ Average price



MTE

	Minimum price (€/MWh)	Maximum price (€/MWh)	Control price (€/MWh)	Control price (change)	Trades	Volumes (MWh)	Volumes (MW)	Volumes OTC (MW)	Volumes OTC (MWh)	Volumes (change)	Open position (MW)	Open position (MWh)
BL-M-2025-04			120,80	0,0%		0,0	0,0	0,0	0,0		0	0
BL-M-2025-05			111,71	0,0%		0,0	0,0	0,0	0,0		0	0
BL-M-2025-06			108,07	0,0%		0,0	0,0	0,0	0,0	-100%	2	1.440
Baseload			113,51	0,0%		0,0	0,0	4,0	8.736,0	-60%	15	32.760
BL-Q-2025-02			123,22	0,0%		0,0	0,0	1,0	2.208,0	-80%	8	17.664
BL-Q-2025-03			131,06	0,0%		0,0	0,0	0,0	0,0		6	13.254
BL-Q-2025-04			122,21	0,0%		0,0	0,0	0,0	0,0		0	0
BL-Q-2026-01			109,82	0,0%		0,0	0,0	0,0	0,0		0	0
BL-Y-2026			132,00	0,0%		0,0	0,0	0,0	0,0		0	0
PL-M-2025-04			118,77	0,0%		0,0	0,0	0,0	0,0		0	0
PL-M-2025-05			112,84	0,0%		0,0	0,0	0,0	0,0		0	0
PL-M-2025-06			121,33	0,0%		0,0	0,0	0,0	0,0		0	0
Peakload			147,46	0,0%		0,0	0,0	0,0	0,0		0	0
PL-Q-2025-02			141,38	0,0%		0,0	0,0	0,0	0,0		0	0
PL-Q-2025-03			139,70	0,0%		0,0	0,0	0,0	0,0		0	0
PL-Q-2025-04			117,41	0,0%		0,0	0,0	0,0	0,0		0	0
PL-Q-2026-01												
PL-Y-2026												

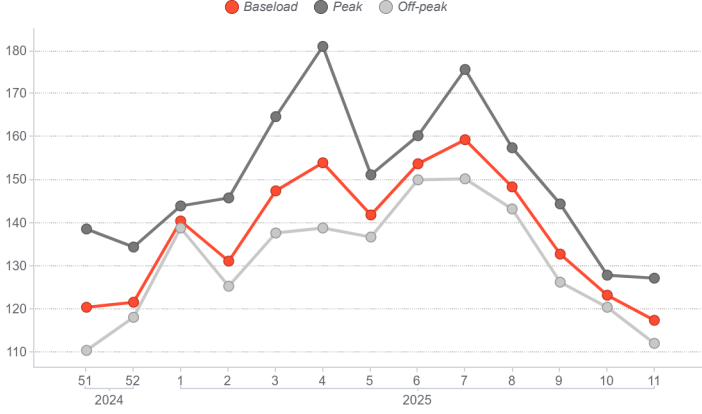
PCE

	Registered transaction (MWh)	% change	Structure
Baseload	512.417	13,1%	13,3%
Peak	2.274	4,9%	0,1%
Off Peak	2.765	28,6%	0,1%
Non Standard	3.312.228	-2,4%	86,2%
Bilateral	3.829.684	-0,5%	99,6%
MTE	2.184	0,0%	0,1%
MPEG	12.600	-38,2%	0,3%
Total PCE	3.844.468	-0,7%	100,0%
Net position	2.408.617	-1,2%	62,7%

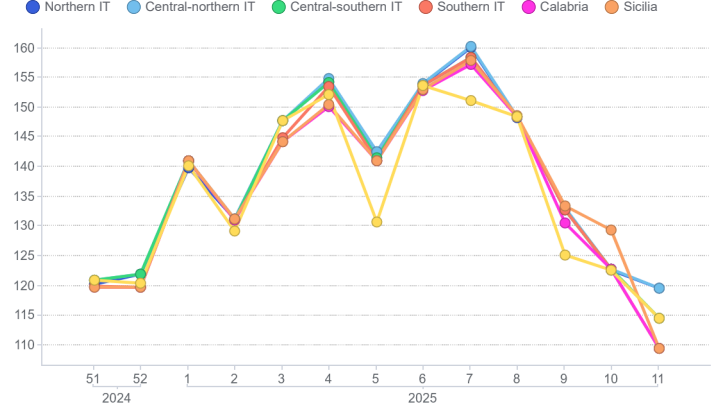
Programs

Schedules	Injection (MWh)	Injection (change)	Withdrawal (MWh)	Withdrawal (change)
Requested	1.175.834	-3,1%	1.630.377	-2,4%
Rejected	240.404	-17,0%	7	131,3%
Registered	935.431	1,3%	1.630.370	-2,4%
Scheduled deviation	1.473.186	-2,7%	778.247	1,6%
Balance of schedules	0		694.939	

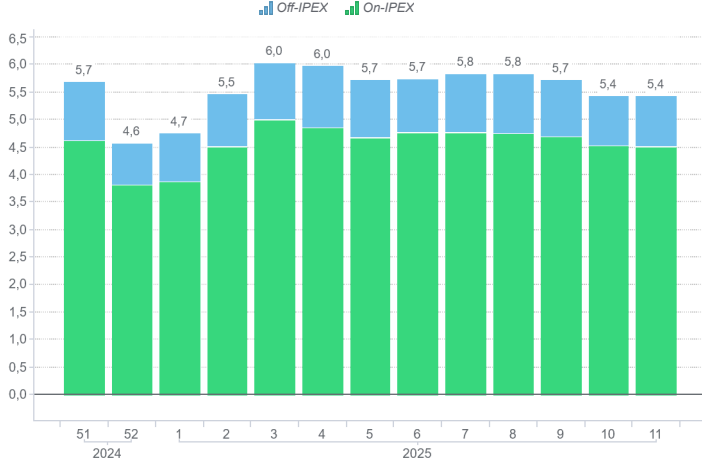
MGP - PUN Index GME (€/MWh)



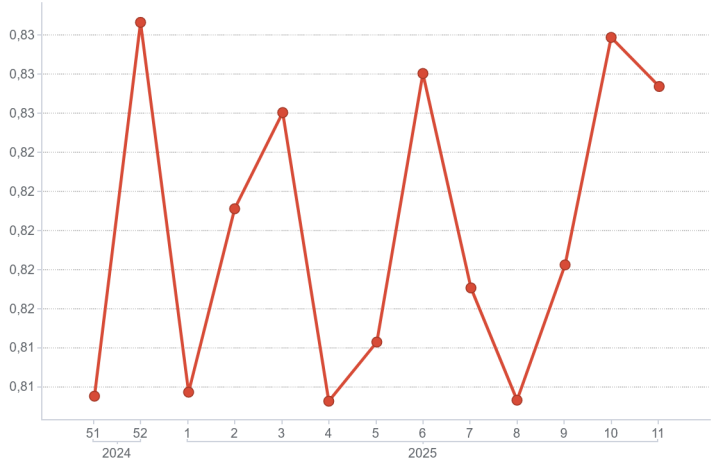
MGP - Zonal Price (€/MWh)



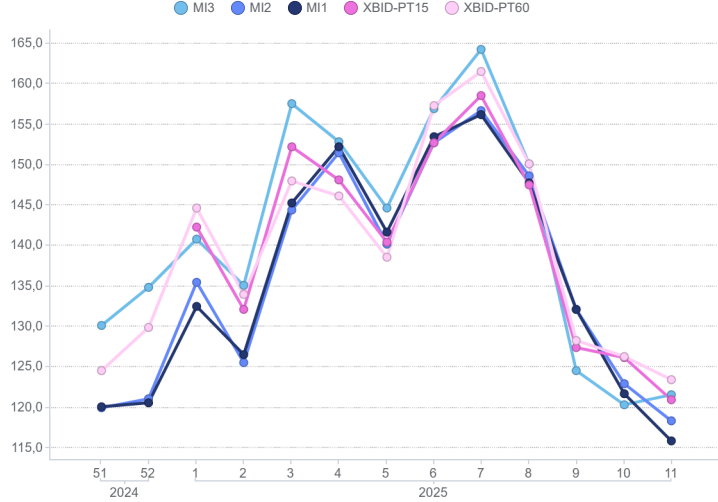
MGP - Volumes (TWh)



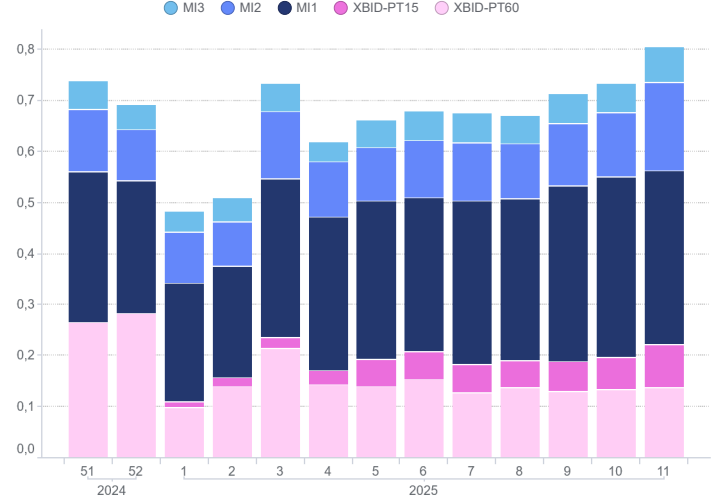
MGP - Liquidity (%)



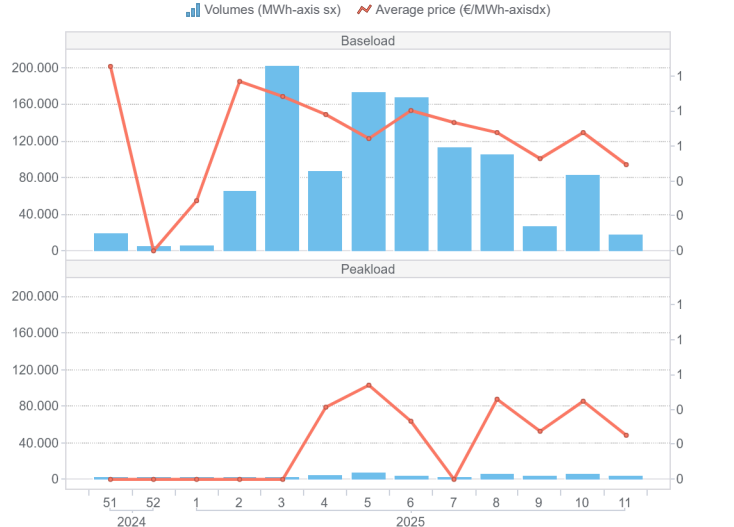
Intra-Day Market (MI) - Prices (€/MWh)



MI - Volumes (TWh)



MPEG



PCE

