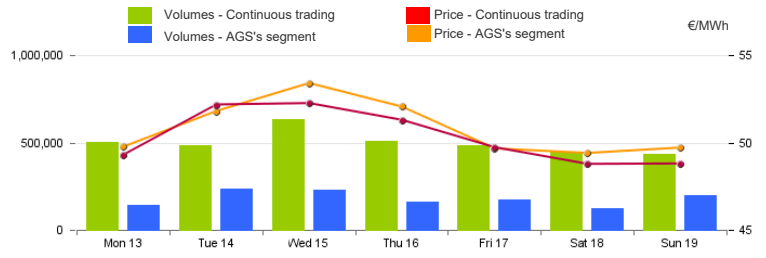


Spot Gas Market (MP-GAS)

Day-Ahead Gas Market (MGP-GAS)

	Price. €/MWh				Volumes. MWh			
	Average	Var	Min	Max	Total	Var	Daily Products	WE Product
Continuous trading	50.27	+5.6%	45.95	53.30	3,493,800	+24.4%	2,824,968	668,832

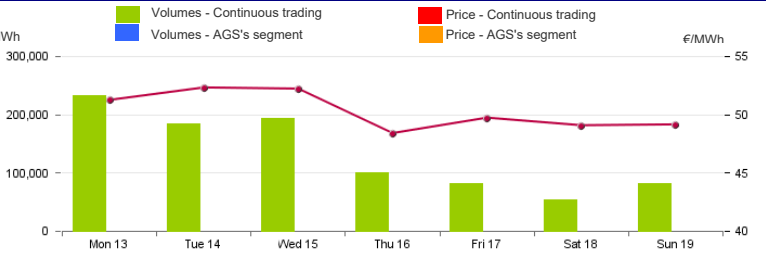
	Price. €/MWh				Volumes. MWh			
	Average	Var	Min	Max	Total	Var	Purchases SRG	Sales SRG
AGS's segment	50.83	+6.6%	49.40	53.40	1,266,480	+140.9%	1,266,480	



Intra-Day Gas Market (MI-GAS)

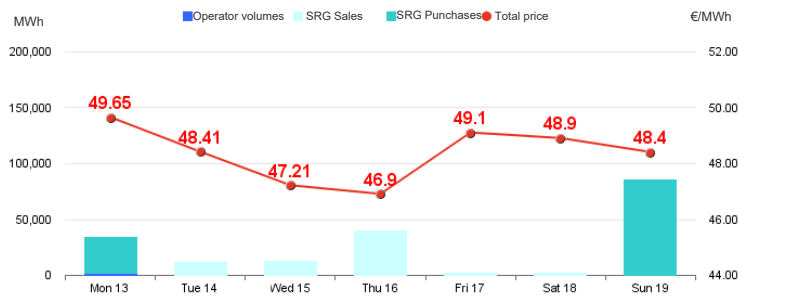
	Price. €/MWh				Volumes. MWh			
	Average	Var	Min	Max	Total	Var	Purchases SRG	Sales SRG
Continuous trading	50.29	+6.6%	47.35	54.00	930,456	+21.2%		

	Price. €/MWh				Volumes. MWh			
	Average	Var	Min	Max	Total	Var	Purchases SRG	Sales SRG
AGS's segment	-	-	-	-	-	-	-	-



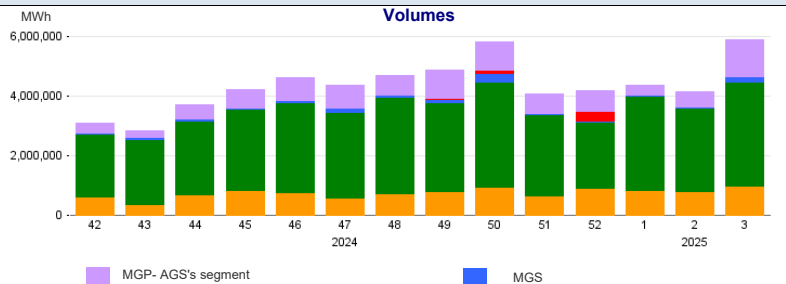
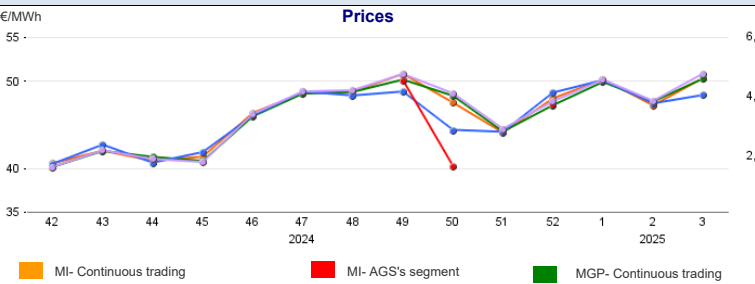
Market for the trading of gas stored (MGS-GAS)

Week	Storage	3	2
Price. (1) €/MWh	Stogit	48.37	47.41
	Edison Stoccaggio	-	-
	Total	48.37	47.41
Volumes. MWh	Stogit	187,864	35,453
	Edison Stoccaggio	-	-
	Total	187,864	35,453
SRG Activity. MWh	Purchases	118,782	24,493
	Balancing (2)	118,782	24,493
	Other purposes (3)	-	-
	Sales	67,882	9,864
	Balancing (2)	67,882	9,864
Other purposes (3)	-	-	



1) The Total price is calculated as a weighted average price for the total volumes exchanged in each storage system.
2) To securely manage any expected deviations between overall network injections and withdrawals pursuant to Art. 2.5 of Annex A, AEEGSI's Resolution 312/2016/R/gas
3) Stored gas trades by Snam Rete Gas (SRG) not included in "Balancing"

Weekly evolution



Forward Gas Market (MT-GAS)

Products	Market					OTC		Total		Open interest*		
	Minimum Price	Maximum Price	Check Price*		Trades	Volumes	Registrations	Volumes	Volumes		Open interest*	
	€/MWh	€/MWh	€/MWh	change %	N.	MWh/d	N.	MWh/d	MWh/d	change %	MWh/d	MWh
M-2025-02	-	-	52.06	0.0%	-	-	-	-	-	-	-	-
Q-2025-02	-	-	51.51	0.0%	-	-	-	-	-	-	-	-
Q-2025-03	-	-	51.79	0.0%	-	-	-	-	-	-	-	-
Q-2025-04	-	-	49.80	0.0%	-	-	-	-	-	-	-	-
SS-2025	-	-	52.75	0.0%	-	-	-	-	-	-	-	-
WS-2025/2026	-	-	48.57	0.0%	-	-	-	-	-	-	-	-
M-2025-03	-	-	51.82	0.0%	-	-	-	-	-	-	-	-
BoM-2025-01	-	-	46.86	-1.2%	-	-	-	-	-	-	-	-
M-2025-04	-	-	50.40	0.0%	-	-	-	-	-	-	-	-
Q-2026-01	-	-	46.10	0.0%	-	-	-	-	-	-	-	-
CY-2026	-	-	41.44	0.0%	-	-	-	-	-	-	-	-
Total											0	0

*Referred to the last session of the week