

PUN Index GME

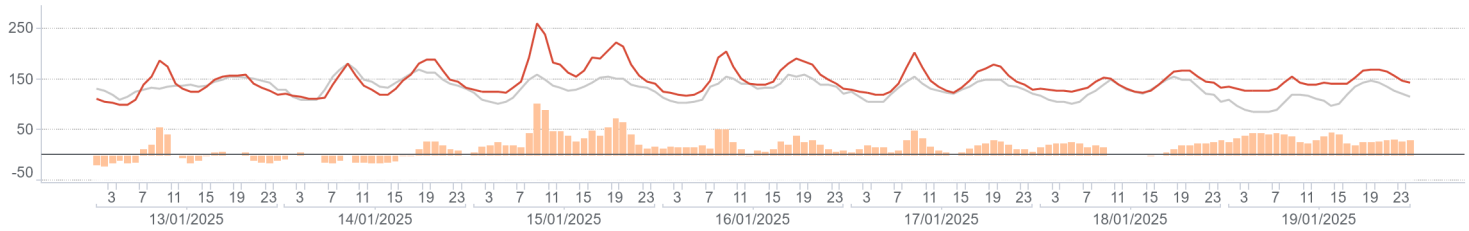
	Average (€/MWh)	Change (€/MWh)	Change (%)
Baseload	147,43	16,32	12,4%
<i>Peak</i>	164,80	19,66	13,5%
<i>Off-peak</i>	137,78	14,46	11,7%
Hourly maximum	260,39		
Hourly minimum	100,00		

Volumes

	MWh	Average (MWh)	Change (%)	
Total supply	National	9.150.245	54.466	-1,9%
	Foreign	1.216.716	7.242	-13,4%
	Total	10.366.961	61.708	-3,4%
Sales	National	4.870.607	28.992	19,3%
	Foreign	1.155.743	6.879	-16,2%
	Total	6.026.350	35.871	10,4%
Purchases	National	5.822.702	34.659	8,6%
	Foreign	203.651	1.212	100,6%
	Total	6.026.350	35.871	10,4%

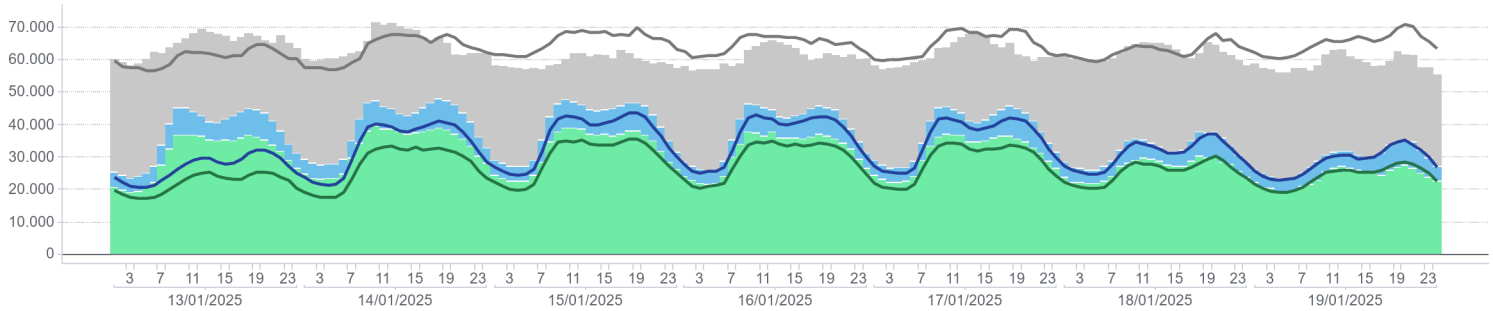
PUN Index GME (€/MWh)

Hourly price / previous week / Price delta



Volumes Supplied, Sold and Purchased (MWh)

Volume unsold / Off-IPEX Sales / On-IPEX Sales / On-IPEX Sales - prev. week / Off-IPEX Sales - prev. week / Volume unsold prev. week



Electricity Supply

	MWh	Change (%)	Structure
IPEX	4.978.157	11,0%	82,6%
Market participants	3.511.076	25,3%	58,3%
GSE	326.982	3,0%	5,4%
Balance of PCE schedules	0		0,0%
PCE (including MTE)	1.048.194	7,3%	17,4%
Foreign zones	577.871	-16,2%	9,6%
National zones	1.032.550	7,3%	17,1%
Balance of PCE schedules	0		0,0%
VOLUMES SOLD	6.026.350	10,4%	100,0%
VOLUMES UNSOLD	4.340.611	-17,7%	
TOTAL SUPPLY	10.366.961	-3,4%	

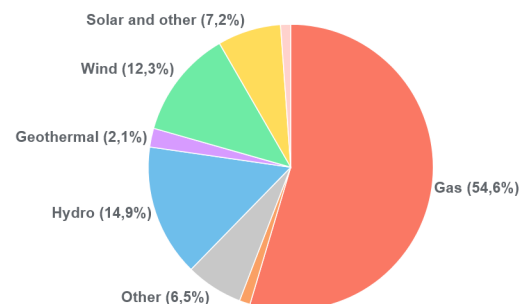
Electricity Demand

	MWh	Change (%)	Structure
IPEX	4.978.157	11,0%	82,6%
Acquirente Unico	134.968	0,9%	2,2%
Other market participants	4.072.383	11,5%	67,6%
Pumped-storage plants	18.252	0,7%	0,3%
Foreign zones	202.781	99,7%	3,4%
Balance of PCE schedules	549.775	-4,9%	9,1%
PCE (including MTE)	1.048.194	7,3%	17,4%
Acquirente Unico - National zones	9.600	300,0%	0,2%
Other participants - National zones	1.587.498	2,3%	26,3%
Balance of PCE schedules	-549.775	-4,9%	-9,1%
VOLUMES PURCHASED	6.026.350	10,4%	100,0%
VOLUMES UNPURCHASED	199.938	-14,7%	
TOTAL DEMAND	6.226.288	9,3%	

Volumes Sold by Source

	Total (MWh)	Average (MWh)	Change (MWh)	Change (%)
Conventional	3.035.993	18.071	5.122	39,6%
Gas	2.660.469	15.836	5.015	46,3%
Coal	60.047	357	8	2,3%
Other	315.477	1.878	98	5,5%
Renewable	1.778.862	10.588	-603	-5,4%
Hydro	727.438	4.330	214	5,2%
Geothermal	103.845	618	11	1,9%
Wind	597.238	3.555	-883	-19,9%
Solar and other	350.342	2.085	55	2,7%
Pumped storage	55.752	332	171	106,1%
Total	4.870.607	28.992	4.690	19,3%

Volumes Sold by Source



Zonal selling price

	Northern IT		Central-northern IT		Central-southern IT		Southern IT		Calabria		Sicilia		Sardegna	
	€/MWh	Var	€/MWh	Var	€/MWh	Var	€/MWh	Var	€/MWh	Var	€/MWh	Var	€/MWh	Var
Baseload	147,84	12,7%	147,84	12,6%	147,84	12,8%	144,83	10,5%	144,18	10,0%	144,19	9,9%	147,84	14,4%
<i>Peak</i>	165,90	14,1%	165,90	14,1%	165,90	14,6%	157,62	8,9%	156,39	8,1%	156,39	8,1%	165,90	14,6%
<i>Off-peak</i>	137,81	11,7%	137,81	11,7%	137,81	11,7%	137,73	11,6%	137,40	11,2%	137,41	11,1%	137,81	14,2%
Hourly maximum	275,00		275,00		275,00		221,91		221,91		221,91		275,00	
Hourly minimum	100,00		100,00		100,00		100,00		100,00		100,00		100,00	

Zonal volumes

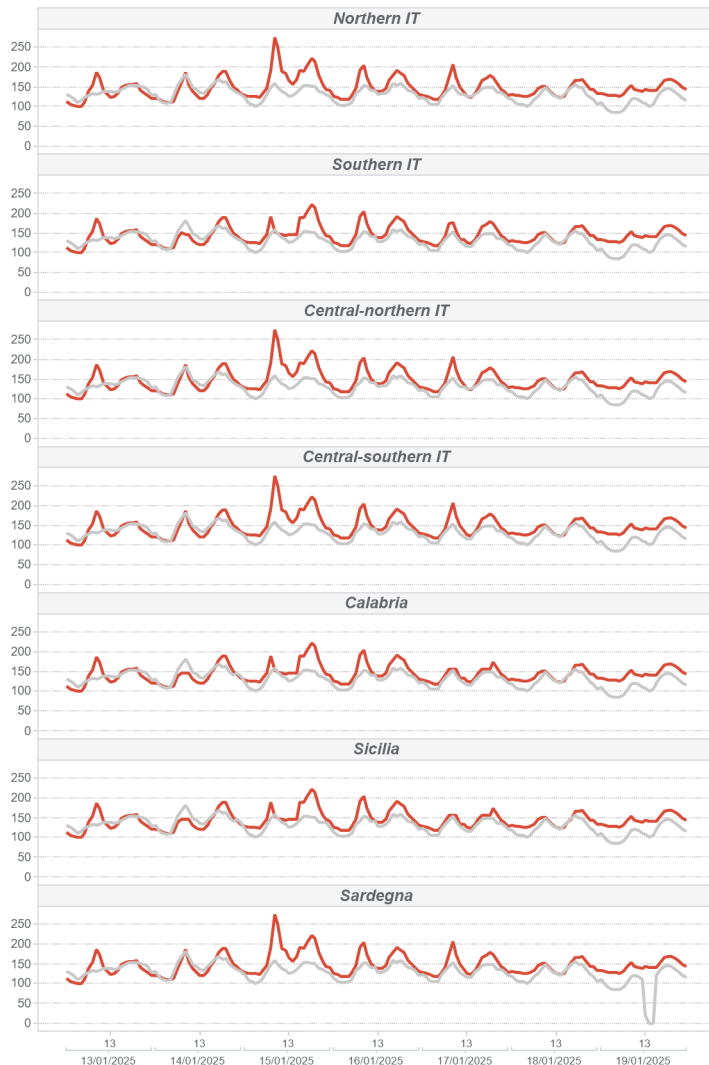
		Northern IT		Central-northern IT		Central-southern IT		Southern IT		Calabria		Sicilia		Sardegna	
		MWh	Var	MWh	Var	MWh	Var	MWh	Var	MWh	Var	MWh	Var	MWh	Var
Total supply	<i>Total</i>	4.827.222	94.303	351.477	-29.848	1.383.318	-61.621	1.082.750	-135.762	575.327	-10.400	614.581	6.396	315.571	-43.369
Sales	<i>Total</i>	2.531.428	553.082	305.309	13.042	608.637	56.424	548.969	-33.348	335.950	165.919	298.590	46.014	241.724	-13.258
Purchase	<i>Total</i>	3.351.418	306.633	495.187	37.670	1.037.200	70.252	343.534	23.078	111.344	5.090	320.352	11.991	163.667	8.445
Total supply	<i>Average</i>	28.733	1,99%	2.092	-7,83%	8.234	-4,26%	6.445	-11,14%	3.425	-1,78%	3.658	1,05%	1.878	-12,08%
Sales	<i>Average</i>	15.068	27,96%	1.817	4,46%	3.623	10,22%	3.268	-5,73%	2.000	97,58%	1.777	18,22%	1.439	-5,20%
Purchase	<i>Average</i>	19.949	10,07%	2.948	8,23%	6.174	7,27%	2.045	7,20%	663	4,79%	1.907	3,89%	974	5,44%

Volumes sold by Source. Hourly Average

		Northern IT		Central-northern IT		Central-southern IT		Southern IT		Calabria		Sicilia		Sardegna	
		MWh	Var	MWh	Var	MWh	Var	MWh	Var	MWh	Var	MWh	Var	MWh	Var
Conventional		10.526	36,6%	739	6,8%	1.970	39,8%	1.759	46,1%	1.526	187,4%	615	36,7%	937	-2,4%
<i>Gas</i>		9.414	40,9%	689	9,4%	1.711	45,5%	1.523	56,6%	1.431	235,1%	584	39,2%	485	-5,7%
<i>Coal</i>		-	-	-	-	-	-	-	-	-	-	-	-	357	2,3%
<i>Other</i>		1.113	8,8%	50	-19,8%	259	11,1%	235	1,8%	95	-8,4%	31	1,8%	95	-1,2%
Renewable		4.265	8,8%	1.079	2,9%	1.598	-14,4%	1.509	-33,3%	474	-1,5%	1.163	10,3%	501	-10,1%
<i>Hydro</i>		2.966	8,0%	269	7,3%	549	3,4%	282	-14,4%	71	10,9%	145	-3,7%	48	8,2%
<i>Geothermal</i>		-	-	618	1,9%	-	-	-	-	-	-	-	-	-	-
<i>Wind</i>		53	31,5%	55	-10,2%	741	-30,5%	1.078	-37,9%	366	-2,7%	896	21,4%	366	-12,9%
<i>Solar and other</i>		1.246	9,8%	137	5,7%	308	14,4%	148	-24,8%	37	-10,4%	122	-26,2%	87	-5,8%
Pumped storage		276	84,5%	-	-	55	416,6%	0	7,3%	-	-	-	-	0	-30,8%
Total		15.068	28,0%	1.817	4,5%	3.623	10,2%	3.268	-5,7%	2.000	97,6%	1.777	18,2%	1.439	-5,2%

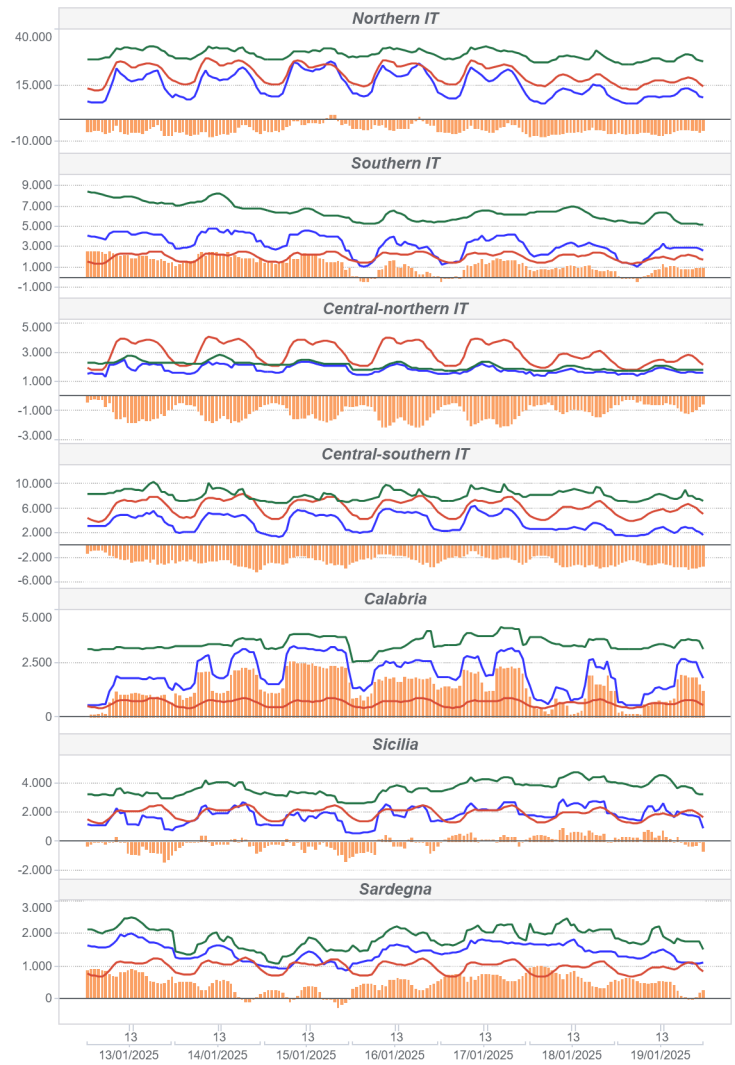
Zonal Selling Price (€/MWh)

● Hourly price ● previous week



Zonal Volumes (MWh)

■ Sales ■ Purchases ■ Offers ■ Flow



Transmissions

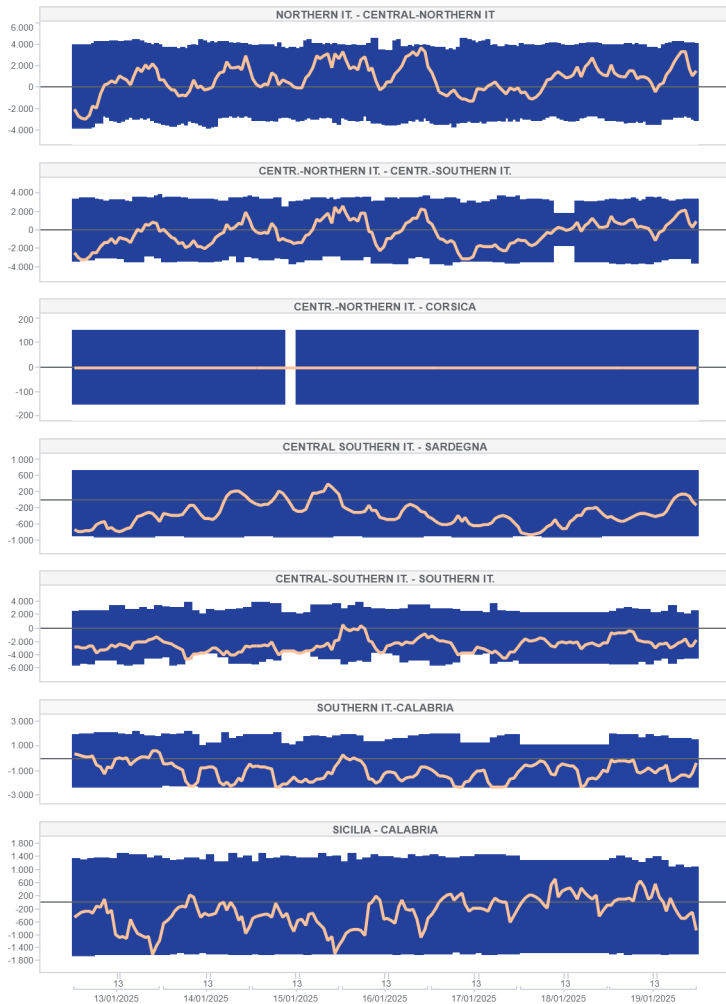
		Direction frequency		Average Physical Transmission Rights Assigned		Average flow		Average use of Physical Transmission Rights Assigned	
		Sett. n.2	Sett. n.3	Sett. n.2	Sett. n.3	Sett. n.2	Sett. n.3	Sett. n.2	Sett. n.3
France - Northern It.	FRAN-NORD	0,0%	0,0%	0	0	0	0		
	NORD-FRAN			0	0	0	0		
Switzerland - Northern It.	SVIZ-NORD	100,0%	90,5%	3.635	3.982	2.880	1.927	79,2%	43,8%
	NORD-SVIZ		9,5%	9.214	2.826	0	579	0,0%	-1,4%
Austria - Northern It.	AUST-NORD	0,0%	0,0%	0	0	0	0		
	NORD-AUST			0	0	0	0		
Montenegro - Central Southern It.	CSUD-MONT	11,3%	39,3%	669	679	109	393	1,8%	22,8%
	MONT-CSUD	88,7%	60,7%	600	646	481	362	71,1%	34,0%
Slovenia - Northern It.	SLOV-NORD	0,0%	0,0%	0	0	0	0		
	NORD-SLOV			0	0	0	0		
Greece - Southern It.	GREC-SUD	0,0%	0,0%	25	25	0	0	0,0%	0,0%
	SUD-GREC			25	25	0	0	0,0%	0,0%

		Direction frequency		Average limit		Average flow		Saturation frequency	
		Sett. n.2	Sett. n.3	Sett. n.2	Sett. n.3	Sett. n.2	Sett. n.3	Sett. n.2	Sett. n.3
Centr.-Northern It. - Centr.-Southern It.	CNOR-CSUD	41,7%	44,0%	3.380	3.311	1.369	920	0,6%	0,0%
	CSUD-CNOR	58,3%	56,0%	3.286	3.210	1.349	1.285	4,2%	0,0%
Northern It. - Central-Northern It.	NORD-CNOR	64,3%	73,2%	4.096	4.009	1.678	1.412	1,2%	0,0%
	CNOR-NORD	35,7%	26,8%	3.436	3.124	893	811	0,0%	0,0%
Central-Northern It. - Corsica	CNOR-CORS	0,6%	0,0%	150	150	150	0	0,6%	1,8%
	CORS-CNOR	7,7%	0,0%	150	150	104	0	0,0%	1,8%
Centro Sud - Sardegna	CSUD-SARD	1,8%	13,7%	720	720	262	174	0,0%	0,0%
	SARD-CSUD	98,2%	86,3%	887	887	483	419	3,6%	0,0%
Centro Sud - Sud	CSUD-SUD	0,6%	1,2%	2.749	2.854	95	432	0,0%	0,0%
	SUD-CSUD	99,4%	98,8%	4.959	4.736	1.812	2.497	0,6%	11,3%
Corsica - Sardegna	CORS-SARD	0,6%	0,0%	150	148	120	0	0,0%	0,0%
	SARD-CORS	99,4%	100,0%	150	148	38	30	6,0%	0,0%
Southern It.-Calabria	CALA-SUD	59,5%	10,1%	1.607	1.684	442	223	1,2%	0,0%
	SUD-CALA	40,5%	89,9%	2.299	2.343	425	1.199	0,0%	5,4%
Sicilia - Calabria	SICI-CALA	17,9%	31,0%	1.370	1.369	217	208	0,0%	0,0%
	CALA-SICI	82,1%	69,0%	1.572	1.578	620	501	1,8%	1,2%
Sicilia - Malta	SICI-MALT	100,0%	100,0%	225	225	139	152	1,8%	17,3%
	MALT-SICI	0,0%	0,0%	225	225	0	0		
Sardegna - Corsica AC	COAC-SARD	0,0%	0,0%	23	23	0	0		
	SARD-COAC	100,0%	100,0%	109	109	87	97	0,0%	0,0%

		Direction frequency		Average limit		Average flow		Saturation frequency	
		Sett. n.2	Sett. n.3	Sett. n.2	Sett. n.3	Sett. n.2	Sett. n.3	Sett. n.2	Sett. n.3
Southern It.-Grecia Coupling	SUD-XGRE	14,3%	33,9%	500	500	320	346	5,4%	16,7%
	XGRE-SUD	83,3%	66,1%	500	500	455	456	69,6%	55,4%
IT Coupling - Northern It.	NORD-COUP			10.000	10.000	0	0	0,0%	0,0%
	COUP-NORD	100,0%	100,0%	10.000	10.000	4.227	4.009	0,0%	0,0%
Coupling - Austria Coupling	COUP-XAUS	23,8%	20,8%	140	135	141	118	23,8%	19,6%
	XAUS-COUP	75,8%	72,0%	348	330	331	315	71,4%	64,9%
Coupling - France Coupling	COUP-XFRA			2.158	2.159	0	0	0,0%	0,0%
	XFRA-COUP	100,0%	100,0%	3.904	3.950	3.759	3.619	72,6%	72,0%
Coupling - Slovenia Coupling	COUP-BSP	26,2%	28,6%	676	679	622	542	22,6%	17,9%
	BSP-COUP	73,2%	62,5%	603	597	567	547	66,1%	51,2%

National transmissions (MWh)

Limite Import Limite Export Flusso



Foreign transmissions (MWh)

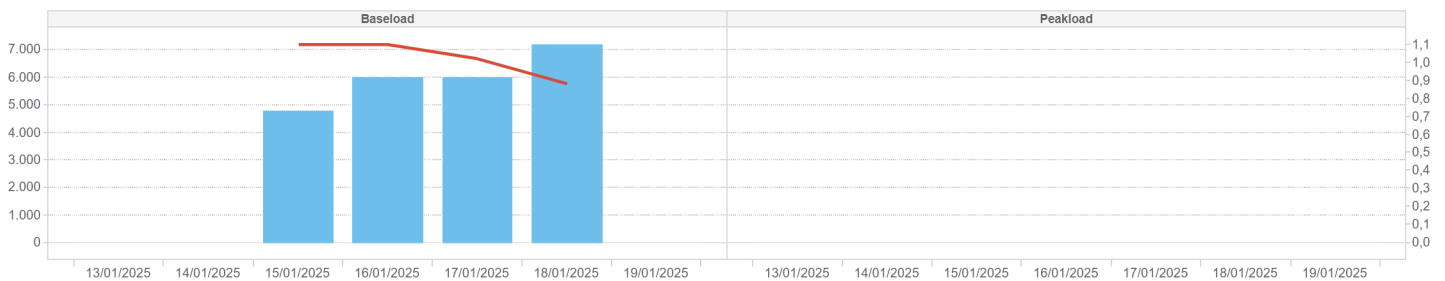
Import netto coup Import netto esplicita Limite Export Limite Import



MPEG

Prodotti	Minimum price (cent. €/MWh)	Maximum price (cent. €/MWh)	Average price (cent. €/MWh)	Volumes (MW)	Voumes (MWh)	Open position (MW)	Open position (MWh)
14/01/2025							
15/01/2025	110,00	110,00	110,00	200	4.800	200	4.800
Baseload	110,00	110,00	110,00	250	6.000	250	6.000
17/01/2025	100,00	105,00	102,00	250	6.000	250	6.000
18/01/2025	85,00	90,00	88,33	300	7.200	300	7.200
19/01/2025							
13/01/2025							
14/01/2025							
Peakload							
15/01/2025							
16/01/2025							
17/01/2025							
TOTALE	85,00	110,00	102,58	250	24.000	300	13.200

■ Volumes ▲ Average price



MTE

	Minimum price (€/MWh)	Maximum price (€/MWh)	Control price (€/MWh)	Control price (change)	Negoiazioni	Volumes (MW)	Volumes (MWh)	Volumes (MWh)	Volumes (change)	Open position (MW)	Open position (MWh)
Baseload											
BL-M-2025-02			126,3	0,0						12	8.064
BL-M-2025-03			126,4	0,0						12	8.916
BL-M-2025-04			125,7	0,0						0	0
BL-Q-2025-02			117,2	0,0						6	13.104
BL-Q-2025-03			125,4	0,0						6	13.248
BL-Q-2025-04			126,6	0,0						6	13.254
BL-Q-2026-01			119,2	0,0						0	0
BL-Y-2026			109,9	0,0						0	0
PL-M-2025-02			140,1	0,0						0	0
PL-M-2025-03			136,1	0,0						0	0
PL-M-2025-04			135,5	0,0						0	0
Peakload											
PL-Q-2025-02			117,4	0,0						0	0
PL-Q-2025-03			133,6	0,0						0	0
PL-Q-2025-04			128,7	0,0						0	0
PL-Q-2026-01			125,5	0,0						0	0
PL-Y-2026			115,7	0,0						0	0

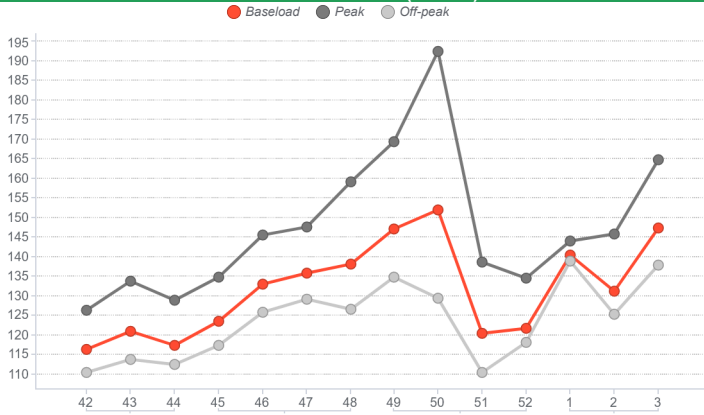
PCE

	Registered transaction (MWh)	% change	Structure
Baseload	434.328	-12,3%	10,7%
Peak	4.170	75,9%	0,1%
Off Peak	1.080	0,0%	0,0%
Non Standard	3.578.787	3,3%	88,5%
Bilateral	4.018.365	1,4%	99,3%
MTE	2.520	0,0%	0,1%
MPEG	24.000	900,0%	0,6%
Total PCE	4.044.885	2,0%	100,0%
Net position	2.544.231	2,6%	62,9%

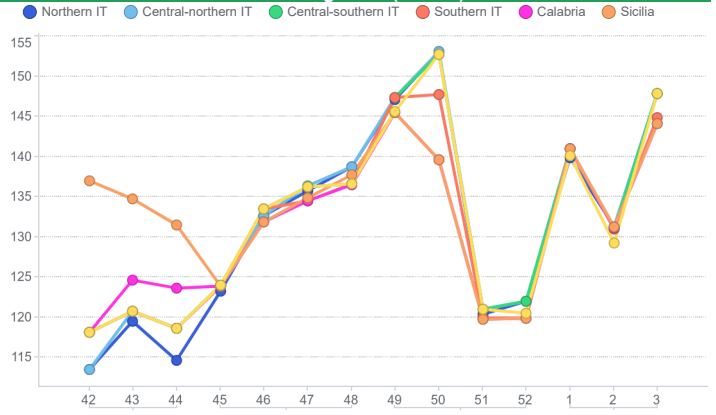
Programs

Schedules	Injection (MWh)	Injection (change)	Withdrawal (MWh)	Withdrawal (change)
Requested	1.336.424	2,2%	1.599.401	2,9%
Rejected	288.231	-12,7%	1.433	745,8%
Registered	1.048.194	7,3%	1.597.968	2,8%
Scheduled deviation	1.496.038	-0,5%	946.263	2,3%
Balance of schedules	0		549.775	

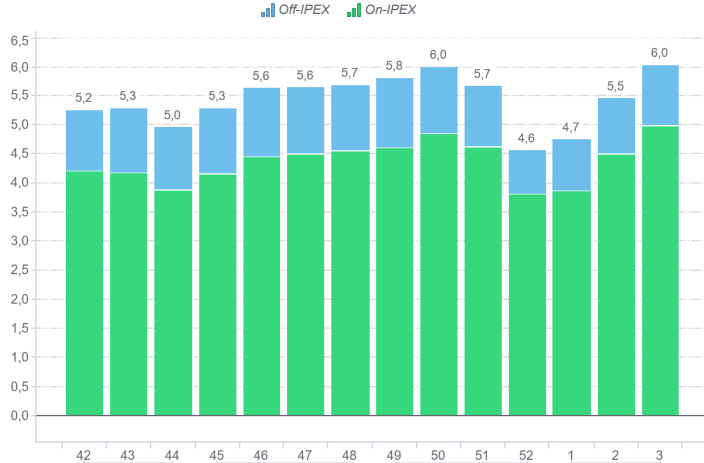
MGP - PUN Index GME (€/MWh)



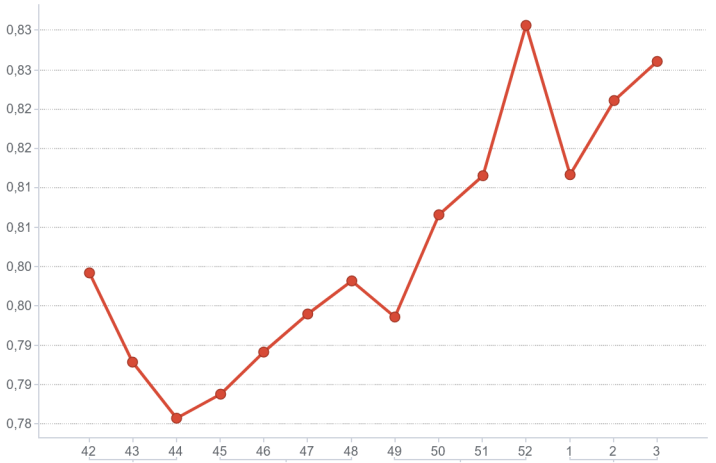
MGP - Selling Price (€/MWh)



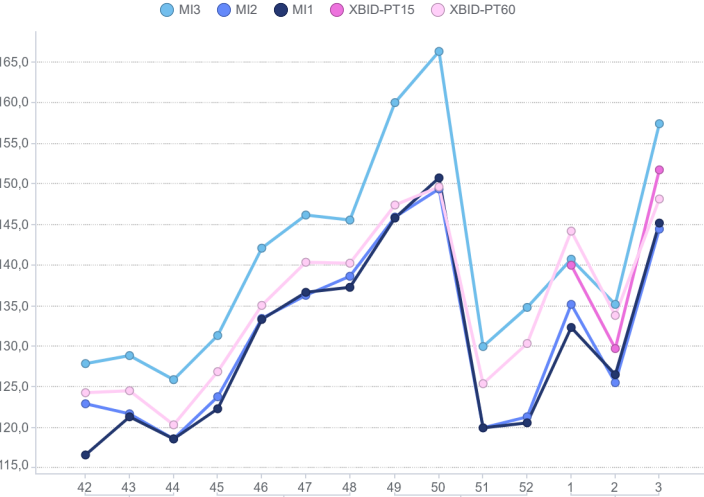
MGP - Volumes (TWh)



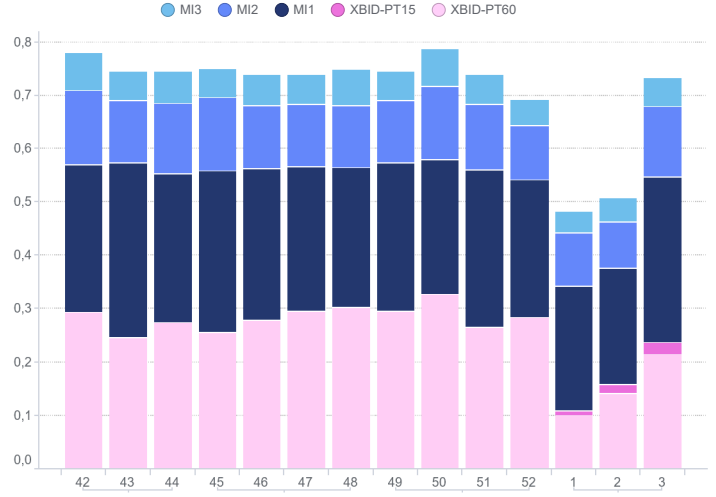
MGP - Liquidity (%)



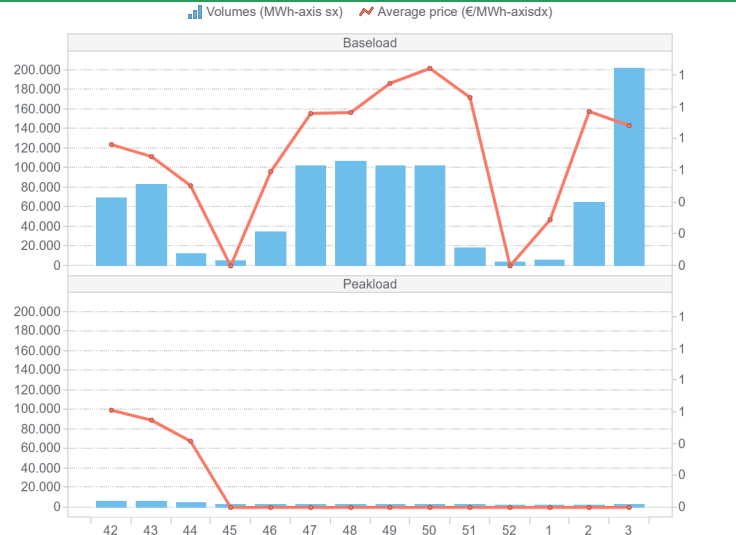
Intra-Day Market (MI) - Prices (€/MWh)



MI - Volumes (TWh)



MPEG



PCE

