

PUN Index GME

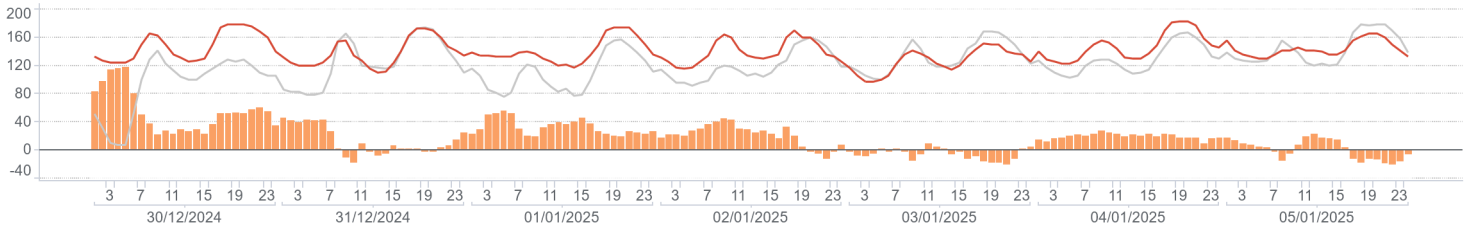
	Average (€/MWh)	Change (€/MWh)	Change (%)
Baseload	140,39	18,84	15,5%
<i>Peak</i>	143,94	12,09	9,2%
<i>Off-peak</i>	138,97	21,54	18,3%
Hourly maximum	183,00		
Hourly minimum	97,00		

Volumes

	MWh	Average (MWh)	Change (%)	
Total supply	National	8.871.046	52.804	-7,7%
	Foreign	1.141.490	6.795	18,8%
	Total	10.012.536	59.598	-5,3%
Sales	National	3.621.894	21.559	-0,1%
	Foreign	1.122.552	6.682	19,8%
	Total	4.744.446	28.241	4,0%
Purchases	National	4.556.449	27.122	2,9%
	Foreign	187.998	1.119	40,2%
	Total	4.744.446	28.241	4,0%

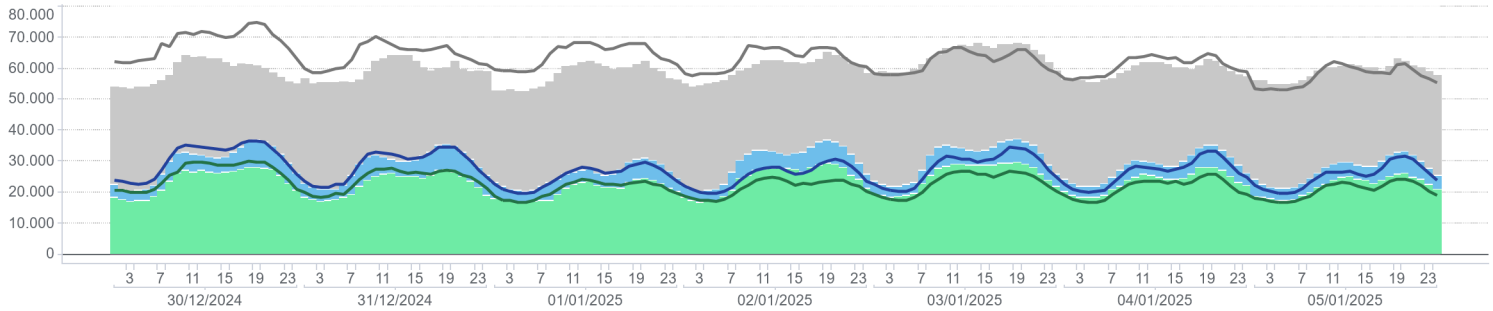
PUN Index GME (€/MWh)

Hourly price / previous week / Price delta



Volumes Supplied, Sold and Purchased (MWh)

Volume unsold / Off-IPEX Sales / On-IPEX Sales / On-IPEX Sales - prev. week / Off-IPEX Sales - prev. week / Volume unsold prev. week



Electricity Supply

	MWh	Change (%)	Structure
IPEX	3.851.268	1,6%	81,2%
<i>Market participants</i>	2.425.546	-4,5%	51,1%
<i>GSE</i>	305.604	-6,1%	6,4%
<i>Balance of PCE schedules</i>	843		0,0%
PCE (including MTE)	893.178	15,6%	18,8%
<i>Foreign zones</i>	561.276	19,8%	11,8%
<i>National zones</i>	890.744	17,0%	18,8%
<i>Balance of PCE schedules</i>	-843		0,0%
VOLUMES SOLD	4.744.446	4,0%	100,0%
VOLUMES UNSOLD	5.268.090	-12,3%	111,0%
TOTAL SUPPLY	10.012.536	-5,3%	211,0%

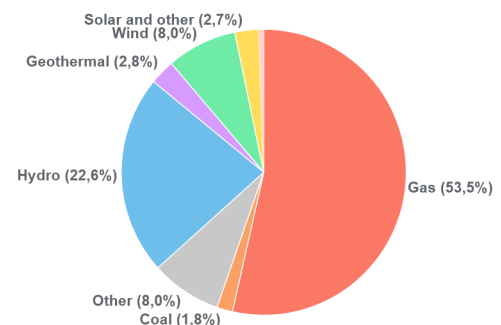
Electricity Demand

	MWh	Change (%)	Structure
IPEX	3.851.268	1,6%	81,2%
<i>Acquirente Unico</i>	152.307	-19,8%	3,2%
<i>Other market participants</i>	3.034.027	9,8%	63,9%
<i>Pumped-storage plants</i>	18.051	-5,0%	0,4%
<i>Foreign zones</i>	187.998	40,2%	4,0%
<i>Balance of PCE schedules</i>	458.884	-33,0%	9,7%
PCE (including MTE)	893.178	15,6%	18,8%
<i>Acquirente Unico - National zones</i>	0		0,0%
<i>Other participants - National zones</i>	1.352.062	-7,2%	28,5%
<i>Balance of PCE schedules</i>	-458.884	-33,0%	-9,7%
VOLUMES PURCHASED	4.744.446	4,0%	100,0%
VOLUMES UNPURCHASED	255.614	-2,9%	5,4%
TOTAL DEMAND	5.000.060	3,6%	105,4%

Volumes Sold by Source

	Total (MWh)	Average (MWh)	Change (MWh)
Conventional	2.294.209	13.656	3.409
<i>Gas</i>	1.939.007	11.542	3.452
<i>Coal</i>	64.913	386	13
<i>Other</i>	290.289	1.728	-57
Renewable	1.307.604	7.783	-3.486
<i>Hydro</i>	817.926	4.869	1.274
<i>Geothermal</i>	102.768	612	-8
<i>Wind</i>	288.660	1.718	-3.195
<i>Solar and other</i>	98.251	585	-1.557
Pumped storage	20.081	120	51
Total	3.621.894	21.559	-27

Volumes Sold by Source



Zonal selling price

	Northern IT		Central-northern IT		Central-southern IT		Southern IT		Calabria		Sicilia		Sardegna	
	€/MWh	Var	€/MWh	Var	€/MWh	Var	€/MWh	Var	€/MWh	Var	€/MWh	Var	€/MWh	Var
Baseload	139,86	14,7%	140,98	15,6%	140,98	15,6%	140,98	17,7%	140,98	17,7%	141,00	17,7%	140,10	16,3%
Peak	143,18	8,4%	144,91	9,7%	144,91	9,7%	144,91	11,2%	144,91	11,1%	144,91	11,1%	141,84	7,4%
Off-peak	138,53	17,5%	139,41	18,3%	139,41	18,3%	139,41	20,6%	139,41	20,6%	139,43	20,6%	139,41	20,4%
Hourly maximum	175,00		192,33		192,33		192,33		192,33		192,33		192,33	
Hourly minimum	97,00		97,00		97,00		97,00		97,00		97,00		50,00	

Zonal volumes

		Northern IT		Central-northern IT		Central-southern IT		Southern IT		Calabria		Sicilia		Sardegna	
		MWh	Var	MWh	Var	MWh	Var	MWh	Var	MWh	Var	MWh	Var	MWh	Var
Total supply	Total	4.744.592	-147.845	349.786	-7.408	1.291.664	-117.853	1.103.116	-276.347	559.963	-26.272	521.926	-132.684	300.000	-30.735
Sales	Total	1.870.796	342.797	292.899	39.110	460.791	-60.343	476.792	-211.611	120.182	-5.247	177.888	-97.195	222.545	-11.996
Purchase	Total	2.380.324	92.718	409.305	14.310	896.476	17.093	307.840	2.395	107.276	-605	304.209	2.116	151.020	-535

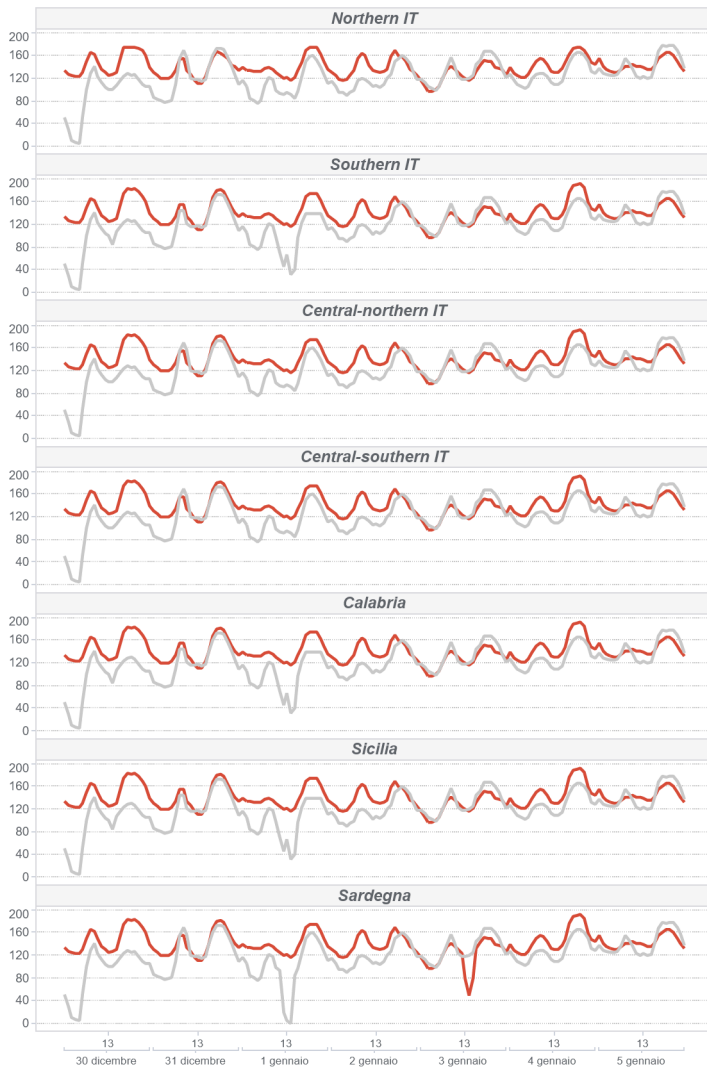
		Northern IT		Central-northern IT		Central-southern IT		Southern IT		Calabria		Sicilia		Sardegna	
		MWh	Var	MWh	Var	MWh	Var	MWh	Var	MWh	Var	MWh	Var	MWh	Var
Total supply	Average	28.242	-3,02%	2.082	-2,07%	7.688	-8,36%	6.566	-20,03%	3.333	-4,48%	3.107	-20,27%	1.786	-9,29%
Sales	Average	11.136	22,43%	1.743	15,41%	2.743	-11,58%	2.838	-30,74%	715	-4,18%	1.059	-35,33%	1.325	-5,11%
Purchase	Average	14.169	4,05%	2.436	3,62%	5.336	1,94%	1.832	0,78%	639	-0,56%	1.811	0,70%	899	-0,35%

Volumes sold by Source. Hourly Average

		Nord		Centro Nord		Centro Sud		Sud		Calabria		Sicilia		Sardegna	
		MWh	Var	MWh	Var	MWh	Var	MWh	Var	MWh	Var	MWh	Var	MWh	Var
Conventional		7.644	34,4%	812	60,9%	1.529	31,1%	1.551	35,7%	477	83,5%	618	27,1%	1.025	2,3%
Gas		6.630	40,6%	755	66,0%	1.334	47,3%	1.323	51,2%	365	139,4%	587	33,0%	547	0,5%
Coal		-	-	-	-	-	-	-	-	-	-	-	-	386	3,5%
Other		1.013	4,4%	57	14,7%	195	-25,2%	228	-14,8%	112	4,3%	32	-30,5%	91	9,0%
Renewable		3.392	1,1%	931	-7,4%	1.195	-37,8%	1.287	-56,4%	238	-51,1%	440	-61,7%	300	-24,0%
Hydro		3.186	48,4%	275	37,5%	609	5,5%	426	3,5%	97	43,2%	193	34,1%	83	76,4%
Geothermal		-	-	612	-1,3%	-	-	-	-	-	-	-	-	-	-
Wind		27	-29,8%	22	-44,5%	436	-57,1%	792	-66,2%	137	-64,0%	143	-83,2%	161	-33,6%
Solar and other		178	-84,8%	23	-84,6%	151	-54,0%	69	-65,2%	4	-88,8%	104	-33,3%	56	-46,6%
Pumped storage		100	84,5%	-	-	19	32,8%	0	-	-	-	-	-	0	10,3%
Total		11.136	22,4%	1.743	15,4%	2.743	-11,6%	2.838	-30,7%	715	-4,2%	1.059	-35,3%	1.325	-5,1%

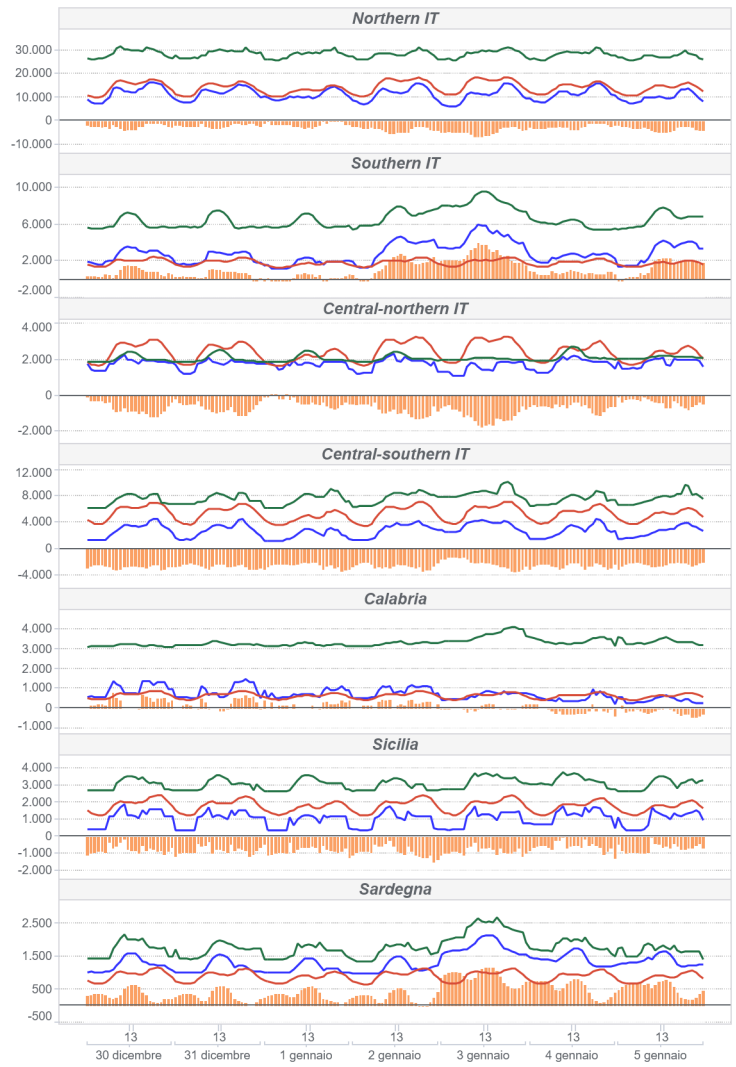
Zonal Selling Price (€/MWh)

● Hourly price ● previous week



Zonal Volumes (MWh)

■ Sales ■ Purchases ■ Offers ■ Flow



Transiti

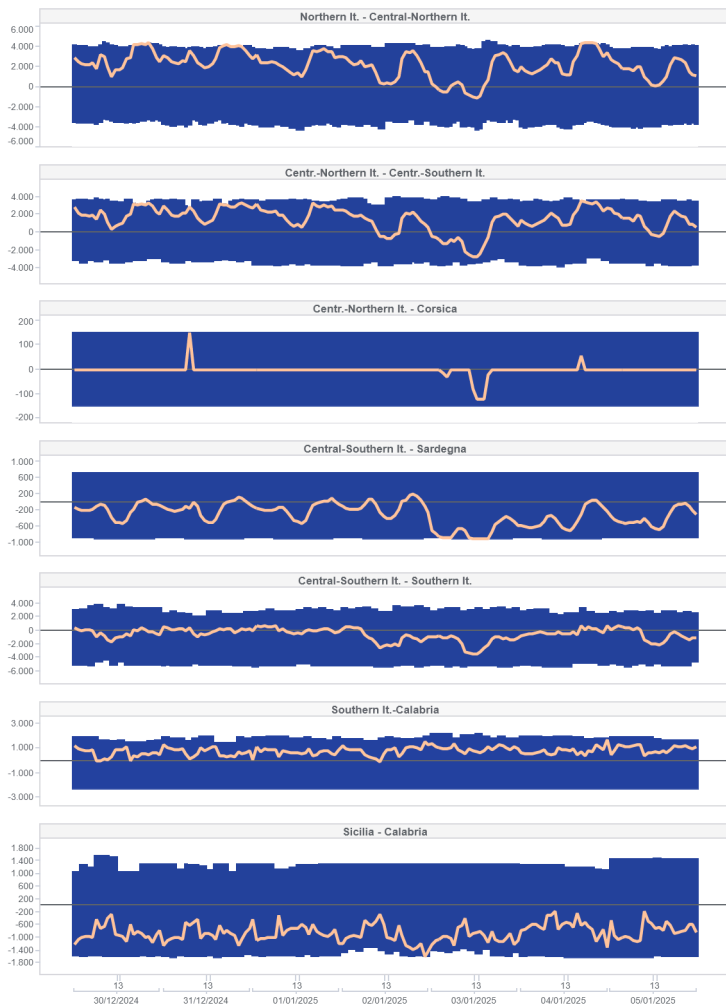
		Direction frequency		Average Physical Transmission Rights Assigned		Average flow		Average use of Physical Transmission Rights Assigned	
		Sett. n.1	Sett. n.52	Sett. n.1	Sett. n.52	Sett. n.1	Sett. n.52	Sett. n.1	Sett. n.52
France - Northern It.	FRAN-NORD	0.0%	0.0%	0	0	0	0		
	NORD-FRAN			0	0	0	0		
Switzerland - Northern It.	SVIZ-NORD	100.0%	100.0%	2.564	2.783	2.251	2.019	87.8%	72.6%
	NORD-SVIZ			3.287	3.293	0	0	0.0%	0.0%
Austria - Northern It.	AUST-NORD	0.0%	0.0%	0	0	0	0		
	NORD-AUST			0	0	0	0		
Montenegro - Central Southern It.	CSUD-MONT	18.5%	42.9%	695	665	318	125	8.4%	8.0%
	MONT-CSUD	81.5%	51.2%	628	424	367	361	47.7%	43.5%
Slovenia - Northern It.	SLOV-NORD	0.0%	0.0%	0	0	0	0		
	NORD-SLOV			0	0	0	0		
Greece - Southern It.	GREC-SUD	0.0%	0.0%	25	25	0	0	0.0%	0.0%
	SUD-GREC			25	25	0	0	0.0%	0.0%

		Direction frequency		Average limit		Average flow		Saturation frequency	
		Sett. n.1	Sett. n.52	Sett. n.1	Sett. n.52	Sett. n.1	Sett. n.52	Sett. n.1	Sett. n.52
Centr.-Northern It. - Centr.-Southern It.	CNOR-CSUD	84.5%	29.2%	3.594	3.527	1.939	1.315	1.2%	0.0%
	CSUD-CNOR	15.5%	70.8%	3.408	3.168	993	1.439	0.0%	0.0%
Northern It. - Central-Northern It.	NORD-CNOR	95.2%	44.0%	4.034	4.220	2.322	1.563	9.5%	0.0%
	CNOR-NORD	4.8%	56.0%	3.740	3.521	736	872	0.0%	0.0%
Central-Northern It. - Corsica	CNOR-CORS	1.2%	0.0%	150	150	103	0	0.6%	0.0%
	CORS-CNOR	4.2%	6.0%	150	150	72	66	0.0%	0.0%
Centro Sud - Sardegna	CSUD-SARD	15.5%	12.5%	720	720	60	87	0.0%	0.0%
	SARD-CSUD	84.5%	87.5%	887	884	366	433	4.2%	6.0%
Centro Sud - Sud	CSUD-SUD	33.3%	3.0%	3.066	3.271	309	370	0.0%	0.0%
	SUD-CSUD	66.7%	97.0%	5.223	4.216	1.005	2.350	0.0%	14.3%
Corsica - Sardegna	CORS-SARD	1.2%	0.0%	150	150	73	0	0.0%	0.0%
	SARD-CORS	98.8%	100.0%	150	150	33	34	1.8%	1.8%
Southern It.-Calabria	SUD-CALA	97.6%	59.5%	1.861	1.800	791	543	0.0%	0.6%
	CALA-SUD	2.4%	40.5%	2.350	2.325	63	370	0.0%	0.0%
Sicilia - Calabria	SICI-CALA		31.5%	1.299	1.339	0	371	0.0%	0.0%
	CALA-SICI	100.0%	68.5%	1.559	1.574	847	577	0.6%	0.0%
Sicilia - Malta	SICI-MALT	95.8%	100.0%	225	225	100	117	0.0%	0.6%
	MALT-SICI	0.0%	0.0%	225	225	0	0	0.0%	0.0%
Sardegna - Corsica AC	COAC-SARD	0.0%	0.0%	23	23	0	0		
	SARD-COAC	100.0%	100.0%	109	108	95	92	0.0%	0.0%

		Direction frequency		Average limit		Average flow		Saturation frequency	
		Sett. n.1	Sett. n.52	Sett. n.1	Sett. n.52	Sett. n.1	Sett. n.52	Sett. n.1	Sett. n.52
Southern It.-Grecia Coupling	SUD-XGRE	16.1%	28.0%	500	500	349	332	7.1%	10.7%
	XGRE-SUD	83.9%	55.4%	500	500	462	463	71.4%	63.7%
IT Coupling - Northern It.	NORD-COUP		0.6%	10.000	10.000	0	240	0.0%	0.0%
	COUP-NORD	100.0%	99.4%	10.000	10.000	2.959	2.721	0.0%	0.0%
Coupling - Austria Coupling	COUP-XAUS	61.9%	17.3%	139	143	140	138	58.3%	14.3%
	XAUS-COUP	36.3%	66.7%	338	335	275	283	26.8%	48.2%
Coupling - France Coupling	COUP-XFRA			2.087	2.094	0	0	0.0%	0.0%
	XFRA-COUP	100.0%	99.4%	3.936	3.735	3.474	2.513	17.9%	22.0%
Coupling - Slovenia Coupling	COUP-BSP	83.9%	25.6%	751	668	686	609	67.3%	17.3%
	BSP-COUP	13.1%	45.8%	458	597	363	427	10.1%	19.6%

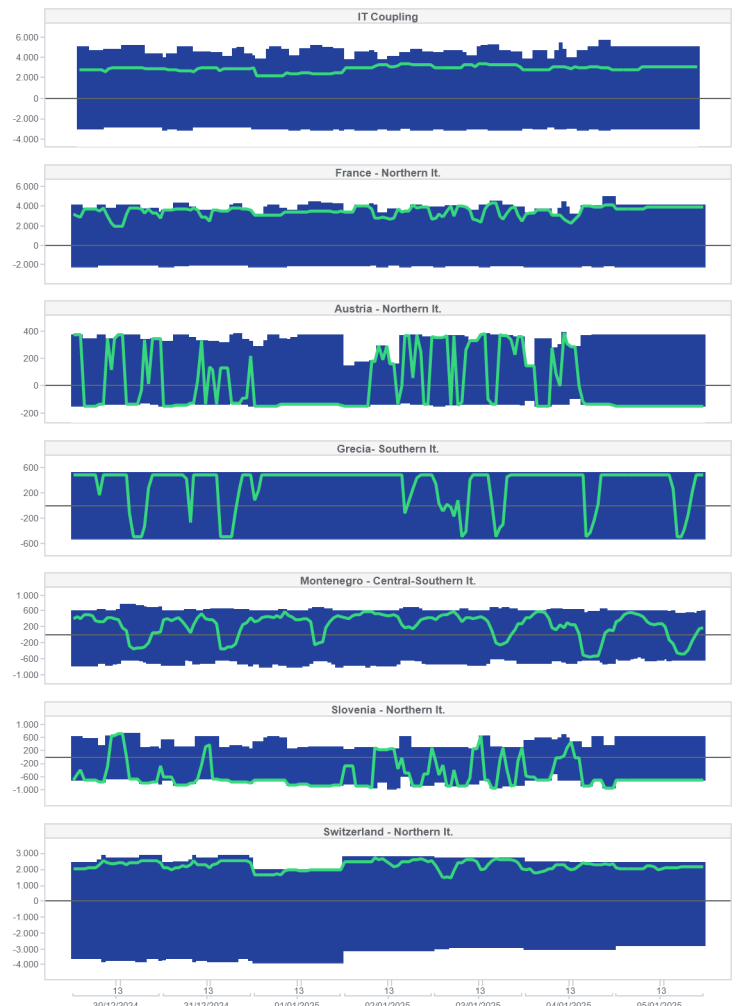
National transmission (MWh)

Limite Import Limite Export Flusso

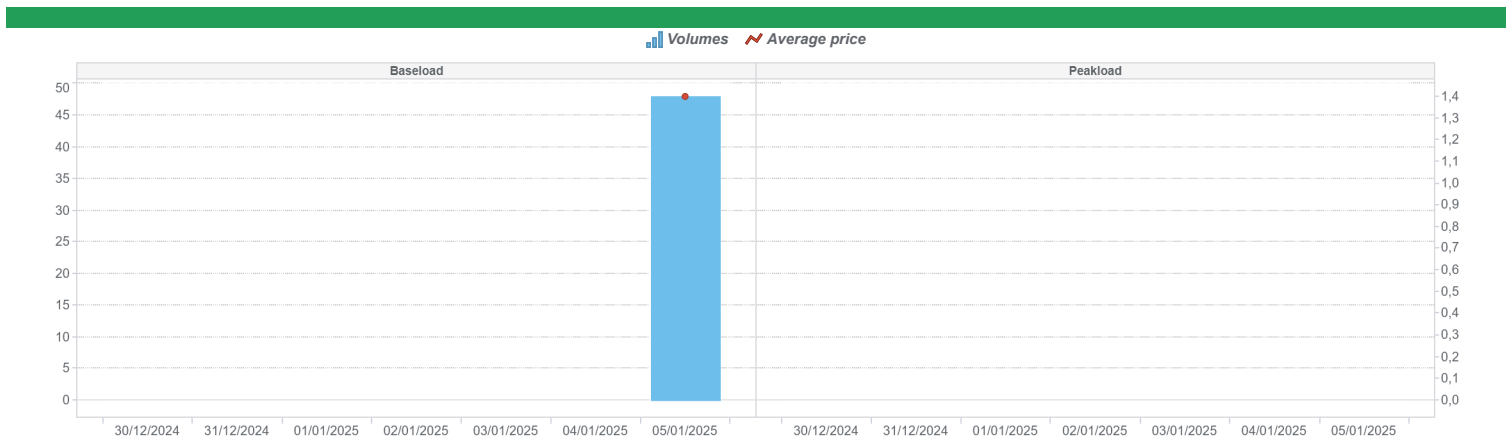


Foreign Transmission (MWh)

Import netto coup Import netto esplicita Limite Export Limite Import



MPEG							
Prodotti	Minimum price (€/MWh)	Maximum price(€/MWh)	Average price (€/MWh)	Volumes (MW)	Voumes (MWh)	Open position (MW)	Open position (MWh)
30/12/2024							
31/12/2024							
01/01/2025							
Baseload							
02/01/2025							
03/01/2025							
04/01/2025							
05/01/2025	140,0	140,0	140,0	2	48	2	48
30/12/2024							
31/12/2024							
Peakload							
01/01/2025							
02/01/2025							
03/01/2025							
TOTAL	140,00	140,00	140,00	2	48	2	48

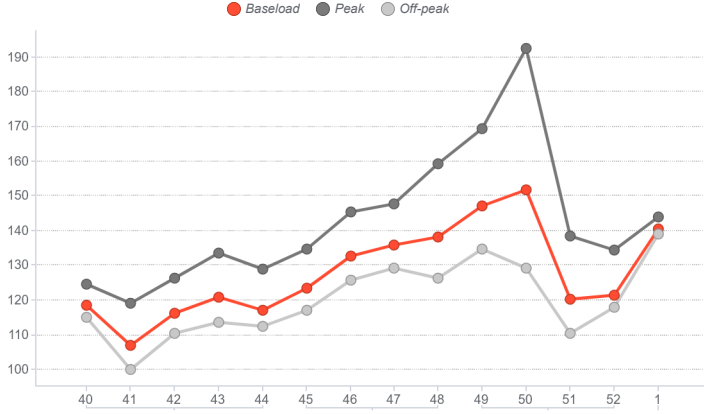


MTE											
	Minimum price (€/MWh)	Maximum price (€/MWh)	Control price (€/MWh)	Control price (change)	Trades	Volumes (MW)	Volumes (MWh)	Volumes (MWh)	Volumes (change)	Open position (MW)	Open position (MWh)
Baseload											
BL-M-2025-02			126,3	0,0						12	8.064
BL-M-2025-03			126,4	0,0						12	8.916
BL-M-2025-04			125,7	0,0						0	0
BL-Q-2025-02			117,2	0,0						6	13.104
BL-Q-2025-03			125,4	0,0						6	13.248
BL-Q-2025-04			126,6	0,0						6	13.254
BL-Q-2026-01			119,2	0,0						0	0
BL-Y-2026			109,9	0,0						0	0
PL-M-2025-02			140,1	0,0						0	0
PL-M-2025-03			136,1	0,0						0	0
PL-M-2025-04			135,5	0,0						0	0
Peakload											
PL-Q-2025-02			117,4	0,0						0	0
PL-Q-2025-03			133,6	0,0						0	0
PL-Q-2025-04			128,7	0,0						0	0
PL-Q-2026-01			125,5	0,0						0	0
PL-Y-2026			115,7	0,0						0	0

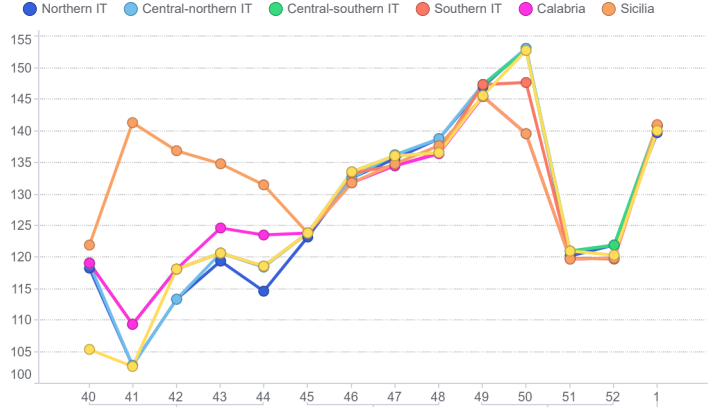
PCE			
	Transazioni (MWh)	Transazioni (Var)	Struttura
Baseload	523.449	-16,9%	13,8%
Peak	40.506	3650,6%	1,1%
Off Peak	80.304	5211,1%	2,1%
Non Standard	3.141.478	4,6%	82,9%
Bilaterals	3.785.737	4,1%	99,9%
MTE	2.376	20,7%	0,1%
MPEG	48		0,0%
PCE total	3.788.161	4,1%	100,0%
Net position	2.364.827	7,0%	62,4%

Programs				
Schedules	Immissione MWh	Immissione Var(%)	Prelievi MWh	Prelievi Var (%)
Requested	1.246.538	6,3%	1.352.407	-7,2%
Rejected	352.518	-11,0%	344	224,4%
Registered	894.021	15,7%	1.352.062	-7,2%
Scheduled deviation	1.470.807	2,4%	1.012.765	34,7%
Balance of schedules	843		458.884	

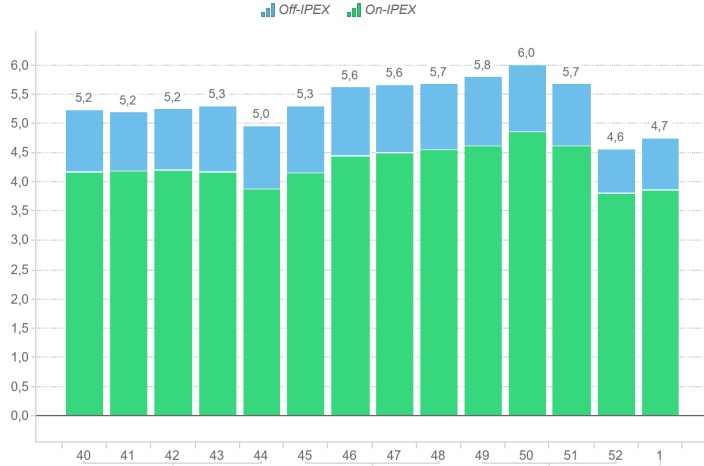
MGP - PUN Index GME (€/MWh)



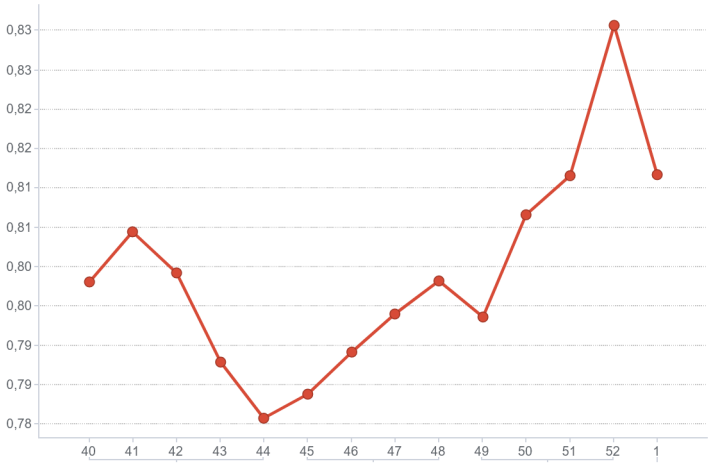
MGP - Selling Price (€/MWh)



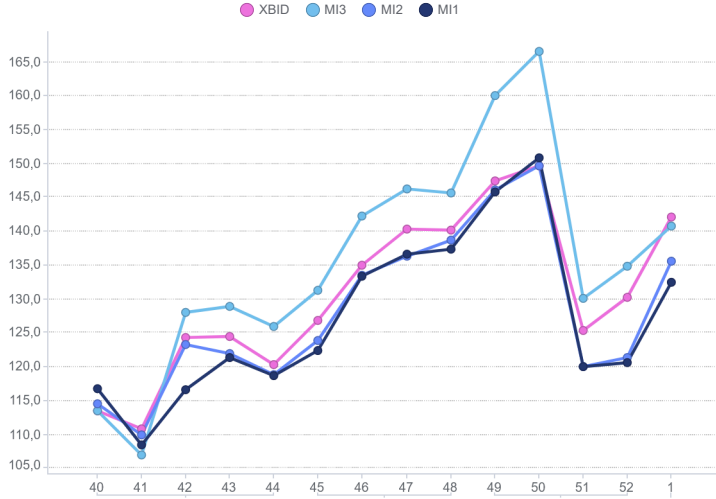
MGP - Volumes (TWh)



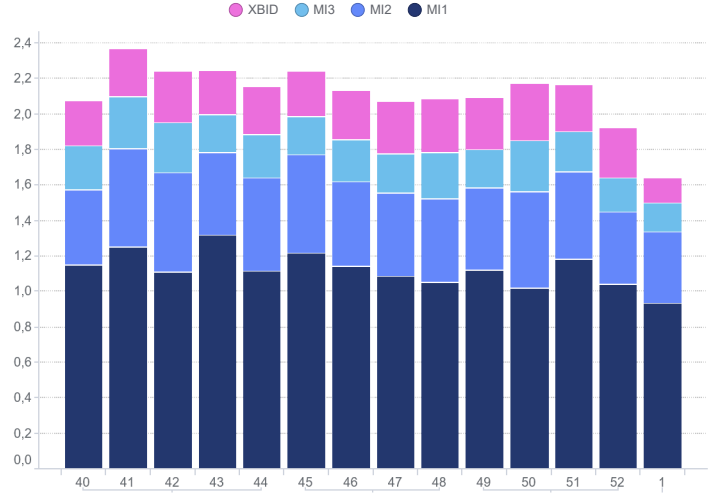
MGP - Liquidity (%)



Intra-Day Market (MI) - Prices (€/MWh)



MI - Volumes (TWh)



MPEG



PCE

